



# EMBRAGUE HIDRÁULICO SEIRE-KURUMA

CATÁLOGO 2023



[www.gruposeire.com](http://www.gruposeire.com)



Bombas de agua

## Nuestras marcas



Embrague y freno



Suspensión y dirección



Modelo	Aplicación	# Seire
<b>AUDI</b>		
<b>A1</b>		
1.4Lts: L4 TFSI 11-18	Cil. Esclavo	KWE0261A
<b>A3</b>		
1.4Lts: L4 13-16	Cil. Maestro	KWM2478
1.4Lts: L4 TFSI 08-16	Cil. Esclavo	KWE0261A
1.4Lts: L4 TFSI 08-16	Cil. Maestro	KWM0388AB
1.8Lts: L4 12-18	Cil. Maestro	KWM2478
1.8Lts: L4 TFSI DOHC 07-10	Cil. Maestro	KWM0388AB
2.0Lts: L4 06-08 Quattro	Cil. Maestro	KWM0388AB
2.0Lts: L4 06-10	Cil. Maestro	KWM0388AB
<b>S3</b>		
2.0Lts: L4 TFSI 08-12	Quattro Cil. Maestro	KWM0388AB
<b>TT</b>		
1.8Lts: 1781 L4 99	Cil. Maestro	KWM0721
1.8Lts: L4 TFSI 08-14, L4 TFSI DOHC 11-12	Cil. Maestro	KWM0388AB
1.8Lts: L4 TFSI 08-14	Roadster Cil. Maestro	KWM0388AB
2.0Lts: L4 16-18	Quattro Cil. Maestro	KWM2478
2.0Lts: L4 TFSI 06-10	Roadster Cil. Maestro	KWM0388AB
2.0Lts: L4 TFSI DOHC 07-10	Cil. Maestro	KWM0388AB
2.5Lts: L4 TFSI 09-14	Quattro Cil. Maestro	KWM0388AB

2.5Lts: L5 TFSI 09-14 Roadster Quattro Cil. Maestro KWM0388AB

3.2Lts: L4 TFSI 06-09 Quattro Cil. Maestro KWM0388AB

3.2Lts: V6 06-08 Roadster Quattro Cil. Maestro KWM0388AB

## BUICK REGAL

2.0Lts: 1998 L4 14-16 Cil. Maestro KGM0997

## SKYHAWK

2.0Lts: L4 85-89 Cil. Esclavo KGE0870

## SKYLARK

2.5Lts: L4 88-89 Cil. Esclavo KGE0870

3.0Lts: V6 86-87 Cil. Esclavo KGE0870

## CHEVROLET / GM 400SS

5.7Lts: V8 95-02 Cil. Maestro KGM0010

## ASTRA

1.8Lts: 99-15 Concéntrico KGC1220

1.8Lts: L4 07-08 Cil. Maestro KGM0769

1.8Lts: L4 16Valv. XE DOHC 00-03 Cil. Maestro KGM0769

1.8Lts: L4 DOHC 06, L4 16Valv. XE DOHC 01-03 Concéntrico KGC1109

1.8Lts: L4 DOHC 07-08 Concéntrico KGC1109

2.0Lts: L4 8Valv. SOHC 04-06 Cil. Maestro KGM0769

2.0Lts: L4 8Valv. SOHC 04-06 Concéntrico KGC1109



Modelo	Aplicación	# Seire			
2.0Lts: V8 99-15		Concéntrico	<b>KGC1220</b>	4.3Lts: 262 V6 96-00	Cil. Maestro <b>KGM0153</b>
2.2Lts: L4 16Valv. DOHC 01-03		Cil. Maestro	<b>KGM0769</b>	4.3Lts: L4 95	Cil. Maestro <b>KGM0539</b>
<b>AVEO</b>				4.3Lts: V6 92-95	Cil. Esclavo <b>KGE0874</b>
1.5Lts: L4 18-23	NG	Cil. Esclavo	<b>KGE4709</b>	4.3Lts: V6 96-01	Concéntrico <b>KGC0944</b>
1.5Lts: L4 18-23	NG	Cil. Maestro	<b>KGM1493</b>	4.3Lts: V6 96-98	Cil. Maestro <b>KGM0010</b>
1.5Lts: L4 MPFI DOHC 18-23	NG	Collarín Mec.	<b>KCMGM08</b>	4.3Lts: V6 97-98	Cil. Esclavo <b>KGE0873</b>
1.6Lts: L4 5Vel. 16Valv. DOHC 08-18		Collarín Mec.	<b>KCMGM06</b>	<b>C10</b>	
<b>BEAT</b>				4.1Lts: 6 75-81	Collarín Mec. <b>KCM4018</b>
1.2Lts: 16Valv. DOHC 18-21		Cil. Maestro	<b>KGM0623</b>	4.8Lts: 6 75-80	Collarín Mec. <b>KCM4018</b>
1.2Lts: 16Valv. DOHC 18-21		Cil. Esclavo	<b>KGE0425</b>	4.8Lts: L6 87-00	Cil. Esclavo <b>KGE0872</b>
1.2Lts: 16Valv. DOHC 18-21		Collarín Mec.	<b>KCMGM03</b>	4.8Lts: L6 87-95	Cil. Maestro <b>KGM0097</b>
<b>BERETTA</b>				5.0Lts: 8 77-81	Collarín Mec. <b>KCM4018</b>
2.2Lts: L4 91-92		Cil. Esclavo	<b>KGE0870</b>	5.7Lts: 8 75-81	Collarín Mec. <b>KCM4018</b>
2.2Lts: L4 95-96		Concéntrico	<b>KGC1080</b>	6.6Lts: 8 76-80	Collarín Mec. <b>KCM4018</b>
2.3Lts: 93-94		Concéntrico	<b>KGC1090</b>	7.4Lts: 8 75-80	Collarín Mec. <b>KCM4018</b>
2.3Lts: L4 L490-92		Cil. Esclavo	<b>KGE0870</b>	<b>C15</b>	
3.1Lts: 93-94		Concéntrico	<b>KGC1090</b>	4.8Lts: L6 87-93	Cil. Maestro <b>KGM0097</b>
<b>BLAZER</b>				4.8Lts: L6 L6 87-96, V8 TBI 96-97	Cil. Esclavo <b>KGE0872</b>
2.2Lts: L4 91-92		Cil. Esclavo	<b>KGE0874</b>	5.7Lts: V8 TBI 96-97	Cil. Esclavo <b>KGE0872</b>
2.2Lts: L4 95-96		Cil. Maestro	<b>KGM0539</b>	<b>C1500</b>	
2.2Lts: L4 95-96		Cil. Esclavo	<b>KGE0873</b>	4.1Lts: L6 94-95, L6 TBI 94-98	Cil. Esclavo <b>KGE0872</b>
2.8Lts: V6 91-95		Cil. Esclavo	<b>KGE0873</b>	4.1Lts: L6 94-95	Cil. Maestro <b>KGM0097</b>
3.1Lts: V6 91-98		Cil. Esclavo	<b>KGE0873</b>	4.3Lts: 262 V6 RWD OHV Gasolina 88-91	Cil. Maestro <b>KGM7741</b>
3.1Lts: V6 96-98		Concéntrico	<b>KGC0944</b>	4.3Lts: V6 96-98	Cil. Maestro <b>KGM0010</b>
				4.3Lts: V6 99-13	Cil. Maestro <b>KGM0137</b>

Modelo	Aplicación		# Seire			
4.3Lts: V6 MPFI 99-13		Concéntrico	<b>KGC0664</b>	5.0Lts: 8 78-79	Collarín Mec.	<b>KCM4018</b>
4.3Lts: V6 MPFI 99-13	Silverado	Concéntrico	<b>KGC0944</b>	5.7Lts: 8 75-82	Collarín Mec.	<b>KCM4018</b>
5.7Lts: V8 95-97, V8 TBI 87-97		Cil. Esclavo	<b>KGE0872</b>	6.2Lts: 8 82	Collarín Mec.	<b>KCM4018</b>
5.7Lts: V8 95-97		Cil. Maestro	<b>KGM0097</b>	6.6Lts: 8 76-79	Collarín Mec.	<b>KCM4018</b>
<b>C20</b>				7.4Lts: 8 75-82	Collarín Mec.	<b>KCM4018</b>
5.7Lts: V8 87-90		Cil. Esclavo	<b>KGE0872</b>	<b>C35</b>		
<b>C2500</b>				4.8Lts: L6 87-91	Cil. Maestro	<b>KGM0097</b>
4.3Lts: 262 V6 RWD OHV Gasolina 88-91		Cil. Maestro	<b>KGM7741</b>	4.8Lts: L6 87-91	Cil. Esclavo	<b>KGE0872</b>
4.3Lts: V8 Gasolina 92-95		Cil. Esclavo	<b>KGE0872</b>	5.7Lts: 8 82-86	Collarín Mec.	<b>KCM4018</b>
4.8Lts: V8 OHV 03-07		Concéntrico	<b>KGC0664</b>	<b>C3500</b>		
5.0Lts: V8 Gasolina 92-95		Cil. Esclavo	<b>KGE0872</b>	5.7Lts: 350 V8 RWD OHV Gasolina 88-91	Cil. Maestro	<b>KGM7741</b>
5.7Lts: V8 99-02	Silverado	Cil. Maestro	<b>KGM0010</b>	5.7Lts: V8 01-07	Cil. Maestro	<b>KGM0137</b>
5.7Lts: V8 99-02	Silverado SLX	Concéntrico	<b>KGC0944</b>	5.7Lts: V8 01-07 HD	Cil. Maestro	<b>KGM0010</b>
5.7Lts: V8 Gasolina 88-94		Cil. Esclavo	<b>KGE0872</b>	5.7Lts: V8 93-95	Concéntrico	<b>KGC0944</b>
6.2Lts: V8 Diesel 92-93		Cil. Esclavo	<b>KGE0872</b>	5.7Lts: V8 95-98	Cil. Esclavo	<b>KGE0872</b>
6.5Lts: V8 Diesel 92-95		Cil. Esclavo	<b>KGE0872</b>	5.7Lts: V8 96-00 HD	Concéntrico	<b>KGC0944</b>
7.4Lts: V8 Gasolina 92-95		Cil. Esclavo	<b>KGE0872</b>	5.7Lts: V8 99-03	Cil. Maestro	<b>KGM0010</b>
<b>C30</b>				5.7Lts: V8 HD Gasolina 92-95	Cil. Maestro	<b>KGM0856</b>
4.1Lts: 6 75-82		Collarín Mec.	<b>KCM4018</b>	6.5Lts: V8 Diesel HD 92-94	Cil. Maestro	<b>KGM0856</b>
4.8Lts: 6 75-82		Collarín Mec.	<b>KCM4018</b>	7.4Lts: V8 96-00 HD	Cil. Maestro	<b>KGM0010</b>
				7.4Lts: V8 HD Gasolina 92-95	Cil. Maestro	<b>KGM0856</b>
				7.4Lts: V8 Vortec 96-00	Concéntrico	<b>KGC0944</b>
				8.1Lts: V8 01-06 HD RWD 91	Cil. Maestro	<b>KGM0010</b>
					Cil. Maestro	<b>KGM7741</b>
				<b>C4000</b>		

Modelo	Aplicación	# Seire
5.7Lts: V8 96-00	Cil. Maestro	KGM0137
<b>CAMARO</b>		
3.4Lts: V6 93-95	Concéntrico	KGC0944
3.8Lts: V6 96-97	Concéntrico	KGC0944
5.7Lts: V8 93-95	Concéntrico	KGC0944
<b>CAVALIER</b>		
1.5Lts: L4 18-22	Cil. Maestro	KGM1493
1.5Lts: L4 MPFI DOHC 18-21	Concéntrico	KGC3123
2.2Lts: 134 L4 90-91	Cil. Esclavo	KGE0870
2.2Lts: L4 16Valv. OHV 00-02, Ecotec L4 DOHC 02-05	Concéntrico	KGC1038
2.2Lts: L4 MPFI OHV 95-99	Concéntrico	KGC1080
2.4Lts: 16Valv. 96-95, L4 MPFI DOHC 95-02	Concéntrico	KGC1080
2.4Lts: L4 00-02	Concéntrico	KGC1038
2.8Lts: V6 93-99	Concéntrico	KGC1090
2.8Lts: V6 OHV 88-89	Cil. Esclavo	KGE0871
3.1Lts: V6 91-94	Cil. Esclavo	KGE0871
3.1Lts: V6 93-99	Concéntrico	KGC1090
<b>CELEBRITY</b>		
2.5Lts: V6 87-89	Cil. Esclavo	KGE0870
2.8Lts: V6 82-86	Collarín Mec.	KCM1430
2.8Lts: V6 90-93	Cil. Esclavo	KGE0870
3.1Lts: V6 87-89	Cil. Esclavo	KGE0871
3.1Lts: V6 90-93	Cil. Esclavo	KGE0870

<b>CHEVY</b>			
1.4Lts: L4 5Vel. 94-12	Monza	Collarín Mec.	KCMGM01
1.4Lts: L4 5Vel. 94-12	C2	Collarín Mec.	KCMGM01
1.4Lts: L4 5Vel. 94-12	C3	Collarín Mec.	KCMGM01
1.4Lts: L4 5Vel. MPFI 94-02	Pop	Collarín Mec.	KCMGM01
1.4Lts: L4 5Vel. MPFI 94-10	Joy	Collarín Mec.	KCMGM01
1.6Lts: L4 11-12, L4 5Vel. MPFI 04-10	Pop	Collarín Mec.	KCMGM01
1.6Lts: L4 5Vel. 94-12	C2	Collarín Mec.	KCMGM01
1.6Lts: L4 5Vel. 94-12	Monza	Collarín Mec.	KCMGM01
1.6Lts: L4 5Vel. 94-12	C3	Collarín Mec.	KCMGM01
1.6Lts: L4 5Vel. MPFI 96-03	Swing	Collarín Mec.	KCMGM01
<b>CHEYENNE</b>			
5.7Lts: V8 87-91	C2500	Cil. Maestro	KGM0097
5.7Lts: V8 87-91	C2500	Cil. Esclavo	KGE0872
5.7Lts: V8 87-98	2500	Cil. Esclavo	KGE0872
5.7Lts: V8 87-98	2500	Cil. Maestro	KGM0097
<b>COBALT</b>			
1.4Lts: 04-15		Concéntrico	KGC1220
<b>CORSA</b>			
02-08		Conector	KGV0589
1.0Lts: 02-09		Cil. Maestro	KGM0712



Modelo	Aplicación	# Seire		
1.0Lts: V8 01-15	Concéntrico	<b>KGC1220</b>	6.5Lts: 8 65-69	Collarín Mec. <b>KCM4018</b>
1.4Lts: 02-09	Cil. Maestro	<b>KGM0712</b>	6.6Lts: 8 70	Collarín Mec. <b>KCM4018</b>
1.4Lts: L4 DOHC 02-03	Concéntrico	<b>KGC1220</b>	6.7Lts: 8 65	Collarín Mec. <b>KCM4018</b>
1.8Lts: 02-09	Cil. Maestro	<b>KGM0712</b>	7.0Lts: 8 67-69	Collarín Mec. <b>KCM4018</b>
1.8Lts: L4 16Valv. Sedan MPFI SOHC 03-08	Concéntrico	<b>KGC1109</b>	7.2Lts: 8 72	Collarín Mec. <b>KCM4018</b>
1.8Lts: L4 16Valv. Hatch Back MPFI SOHC 03-08	Concéntrico	<b>KGC1109</b>	7.4Lts: 8 70-72	Collarín Mec. <b>KCM4018</b>
1.8Lts: V8 01-15	Concéntrico	<b>KGC1220</b>	<b>JIMMY</b>	
<b>CORSICA</b>			2.8Lts: V6 91-94	Cil. Esclavo <b>KGE0873</b>
95-96	Concéntrico	<b>KGC1090</b>	4.3Lts: 262 V6 96-01	Cil. Maestro <b>KGM0153</b>
<b>CORVETTE</b>			4.3Lts: V6 92	Cil. Esclavo <b>KGE0874</b>
5.7Lts: V8 OHV 97-04	Concéntrico	<b>KGC0944</b>	4.3Lts: V6 96-98	Concéntrico <b>KGC0944</b>
<b>CRUZE</b>			<b>K1500</b>	
1.4Lts: 1364 L4 11-15	Cil. Maestro	<b>KGM0997</b>	4.3Lts: V6 96-98	Concéntrico <b>KGC0944</b>
1.8Lts: 10-16	Conector	<b>KGV0589</b>	5.0Lts: V8 96-99	Concéntrico <b>KGC0944</b>
1.8Lts: 1796 L4 11-15	Cil. Maestro	<b>KGM0997</b>	5.7Lts: 350 V8 4WD OHV Gasolina 88-91	Cil. Maestro <b>KGM7741</b>
<b>HUNTER</b>			5.7Lts: V8 96-99	Concéntrico <b>KGC0944</b>
5.7Lts: V8 87-93	Cil. Esclavo	<b>KGE0872</b>	6.5Lts: V8 Diesel 96-98	Concéntrico <b>KGC0944</b>
5.7Lts: V8 87-93	Cil. Maestro	<b>KGM0097</b>	<b>K2500</b>	
<b>IMPALA</b>			5.0Lts: V8 98	Concéntrico <b>KGC0944</b>
4.1Lts: 6 65-72	Collarín Mec.	<b>KCM4018</b>	5.7Lts: 350 V8 4WD OHV Gasolina 88-91	Cil. Maestro <b>KGM7741</b>
4.6Lts: 8 67	Collarín Mec.	<b>KCM4018</b>	5.7Lts: V8 96-00	Concéntrico <b>KGC0944</b>
5.0Lts: 8 68-72	Collarín Mec.	<b>KCM4018</b>	6.5Lts: V8 Diesel 96-00	Concéntrico <b>KGC0944</b>
5.3Lts: 8 65-69	Collarín Mec.	<b>KCM4018</b>	7.4Lts: V8 96-00	Concéntrico <b>KGC0944</b>
5.4Lts: 8 65-69	Collarín Mec.	<b>KCM4018</b>	<b>K3500</b>	
5.7Lts: 8 69-72	Collarín Mec.	<b>KCM4018</b>		



Modelo	Aplicación	# Seire
5.7Lts: 350 V8 4WD OHV Gasolina 88-91	Cil. Maestro	KGM7741

### LUMINA

2.5Lts: L4 92	Cil. Esclavo	KGE0871
3.1Lts: V6 92-93	Cil. Esclavo	KGE0871
3.4Lts: V6 92-93	Cil. Esclavo	KGE0871

### LUV

2.2Lts: 4 97-01	Cil. Esclavo	KGE4993
2.2Lts: 99-05	Cil. Maestro	KGM2188

### MALIBU

3.8Lts: 6 80-81	Collarín Mec.	KCM4018
4.1Lts: 6 80	Collarín Mec.	KCM4018
4.4Lts: 8 80	Collarín Mec.	KCM4018
5.0Lts: 8 80	Collarín Mec.	KCM4018
5.7Lts: 8 80-81	Collarín Mec.	KCM4018

### MATIZ

1.0Lts: 62 L4 SOHC 04-14	Collarín Mec.	KCMGM03
-----------------------------	---------------	---------

### MERIVA

1.0Lts: 02-09	Cil. Maestro	KGM0712
1.4Lts: 02-09	Cil. Maestro	KGM0712
1.8Lts: 02-09	Cil. Maestro	KGM0712
1.8Lts: L4 DOHC 06-08, L4 MPFI OHC 04-08	Concéntrico	KGC1109
1.8Lts: V16 03-15	Concéntrico	KGC1220

### METRO

1.0Lts: L4 83-97	Collarín Mec.	KCMGM03
1.3Lts: L4 89-01	Collarín Mec.	KCMGM03

### MICROBUS

5.7Lts: V8 85-98	Vanette P300	Cil. Esclavo	KGE0872
------------------	-----------------	--------------	---------

### NOVA

5.0Lts: 8 75-79	Collarín Mec.	KCM4018
5.7Lts: 8 75-79	Collarín Mec.	KCM4018

### ONIX

1.0Lts: 12-15	Concéntrico	KGC1220
1.0Lts: L3 20-22	Cil. Maestro	KGM5304
1.2Lts: L3 20-22	Cil. Maestro	KGM5304
1.4Lts: V8 12-15	Concéntrico	KGC1220

### OPTRA

2.0Lts: L4 16Valv. DOHC 06-10	Concéntrico	KGC6828
----------------------------------	-------------	---------

### P30

4.3Lts: V6 96-00	Cil. Maestro	KGM0010
4.8Lts: 6 85-89	Collarín Mec.	KCM4018
5.7Lts: V8 97-03	Concéntrico	KGC0944
5.7Lts: V8 97-98	Cil. Esclavo	KGE0872
5.7Lts: V8 97-98	Cil. Maestro	KGM0097
6.2Lts: 8 85-89	Collarín Mec.	KCM4018
6.2Lts: V8 92-94	Cil. Esclavo	KGE0872
7.4Lts: 8 85-89	Collarín Mec.	KCM4018

### PICK UP

5.0Lts: V8 96	Cil. Maestro	KGM0010
---------------	--------------	---------

### PRISMA

1.0Lts: 13-15	Concéntrico	KGC1220
1.4Lts: 13-15	Concéntrico	KGC1220

### S10

2.2Lts: L4 98-03	Cil. Maestro	KGM0153
------------------	--------------	---------





Modelo	Aplicación	# Seire
2.2Lts: L4 F. I. OHV 96	Cil. Esclavo	<b>KGE0873</b>
2.2Lts: L4 F. I. OHV 96	Cil. Maestro	<b>KGM0539</b>
2.2Lts: L4 OHV 96-04	Concéntrico	<b>KGC0944</b>
2.5Lts: 151 L4 85- 91	Cil. Esclavo	<b>KGE8813</b>
2.5Lts: 2474 L4 OHC Gasolina 87, 2474 L4 OHV Gasolina 85-89	Cil. Esclavo	<b>KGE8812</b>
2.8Lts: 173 V6 84- 85	Cil. Esclavo	<b>KGE8813</b>
2.8Lts: 173 V6 OHV Gasolina 84- 85	Cil. Esclavo	<b>KGE8812</b>
2.8Lts: V6 91-95	Cil. Esclavo	<b>KGE0873</b>
3.1Lts: V6 91-95	Cil. Esclavo	<b>KGE0873</b>
4.3Lts: 262 V6 93- 95	Cil. Esclavo	<b>KGE0874</b>
4.3Lts: V6 98	Concéntrico	<b>KGC0944</b>
4.3Lts: V6 OHV 96-03	Cil. Maestro	<b>KGM0153</b>
86-89	Cil. Esclavo	<b>KGE8813</b>
<b>S10 BLAZER</b>		
84-89, Gasolina 86	Cil. Esclavo	<b>KGE8813</b>
2.8Lts: 173 V6 OHV Gasolina 84- 89	Cil. Esclavo	<b>KGE8812</b>
<b>S15</b>		
85-89, Gasolina 84	Jimmy Cil. Esclavo	<b>KGE8813</b>

2.0Lts: 122 L4 84	Cil. Esclavo	<b>KGE8813</b>
2.0Lts: 122 L4 OHV Gasolina 84	Cil. Esclavo	<b>KGE8812</b>
2.5Lts: 151 L4 85- 91	Cil. Esclavo	<b>KGE8813</b>
2.5Lts: 151 L4 OHV Gasolina 85	Cil. Esclavo	<b>KGE8812</b>
2.8Lts: 173 V6 OHV Gasolina 84- 89	Cil. Esclavo	<b>KGE8812</b>
86-89	Cil. Esclavo	<b>KGE8813</b>
<b>SIERRA</b>		
4.3Lts: V6 96-98	Concéntrico	<b>KGC0944</b>
4.3Lts: V8 99-06 1500	Cil. Maestro	<b>KGM0137</b>
4.8Lts: V8 99-06 1500	Cil. Maestro	<b>KGM0137</b>
6.0Lts: V8 00-06 2500	Cil. Maestro	<b>KGM0137</b>
<b>SILVERADO</b>		
4.3Lts: V6 08-16 1500	Concéntrico	<b>KGC0112</b>
4.3Lts: V6 96-98	Cil. Maestro	<b>KGM0010</b>
4.3Lts: V6 96-98	Concéntrico	<b>KGC0944</b>
4.3Lts: V6 99-00	Cil. Maestro	<b>KGM0137</b>
4.3Lts: V6 MPFI 14-16	Concéntrico	<b>KGC0664</b>
4.8Lts: V8 OHV 03-07	Concéntrico	<b>KGC0664</b>
5.0Lts: V8 99-00	Cil. Maestro	<b>KGM0137</b>
5.7Lts: V8 94-95 2500	Cil. Maestro	<b>KGM0097</b>
5.7Lts: V8 94-95 2500	Cil. Esclavo	<b>KGE0872</b>
5.7Lts: V8 96-98	Cil. Maestro	<b>KGM0097</b>
5.7Lts: V8 96-98	Concéntrico	<b>KGC0944</b>
5.7Lts: V8 96-98	Cil. Esclavo	<b>KGE0872</b>



Modelo	Aplicación	# Seire
5.7Lts: V8 99-00	Cil. Maestro	<b>KGM0137</b>
6.0Lts: V8 08-12	3500 Concéntrico	<b>KGC0112</b>
6.2Lts: V8 Diesel 99-00	Cil. Maestro	<b>KGM0137</b>
7.4Lts: V8 Vortec 96-00	1500 HD Concéntrico	<b>KGC0944</b>
7.4Lts: V8 Vortec 97-00	Concéntrico	<b>KGC0944</b>
<b>SONIC</b>		
1.6Lts: L4 DOHC 12-17	Concéntrico	<b>KGC0077</b>
1.6Lts: L4 DOHC Gasolina 12-17	Cil. Maestro	<b>KGM0800</b>
<b>SONOMA</b>		
2.2Lts: L4 00-02	Cil. Maestro	<b>KGM0153</b>
2.2Lts: L4 94-00	Cil. Esclavo	<b>KGE0873</b>
2.5Lts: 151 L4 91	Cil. Esclavo	<b>KGE8813</b>
2.5Lts: L4 92-93	Cil. Esclavo	<b>KGE0873</b>
2.8Lts: L4 92-93	Cil. Esclavo	<b>KGE0873</b>
4.3Lts: V6 92-95	Cil. Esclavo	<b>KGE0874</b>
4.3Lts: V6 98-03	Cil. Maestro	<b>KGM0153</b>
<b>SPARK</b>		
1.2Lts: L4 16Valv. DOHC 11-17	Cil. Maestro	<b>KGM0623</b>
1.2Lts: L4 16Valv. DOHC Gasolina 11-17	Cil. Esclavo	<b>KGE0425</b>
1.2Lts: L4 5Vel. 16Valv. DOHC 11-17	Collarín Mec.	<b>KCMGM03</b>
1.4Lts: Ecotec L4 16Valv. DOHC 16-23	NG Concéntrico	<b>KGC0536</b>

1.4Lts: Ecotec L4 16Valv. DOHC 16-23	NG Cil. Maestro	<b>KGM8983</b>
--------------------------------------	-----------------	----------------

**SUBURBAN**

5.7Lts: V6 88-98	Cil. Esclavo	<b>KGE0872</b>
------------------	--------------	----------------

**SUNBIRD PONTIAC**

2.0Lts: L4 91-94	Cil. Esclavo	<b>KGE0870</b>
------------------	--------------	----------------

2.2Lts: L4 00-01, L4 MPFI DOHC 03-05	Concéntrico	<b>KGC1038</b>
--------------------------------------	-------------	----------------

2.2Lts: L4 MPFI DOHC 95-99	Concéntrico	<b>KGC1080</b>
----------------------------	-------------	----------------

2.3Lts: L4 95	Concéntrico	<b>KGC1080</b>
---------------	-------------	----------------

2.4Lts: L4 00-02	Concéntrico	<b>KGC1038</b>
------------------	-------------	----------------

2.8Lts: V6 89-94	Cil. Esclavo	<b>KGE0871</b>
------------------	--------------	----------------

3.1Lts: V6 89-94	Cil. Esclavo	<b>KGE0871</b>
------------------	--------------	----------------

93-94	Concéntrico	<b>KGC1090</b>
-------	-------------	----------------

**TAHOE**

5.7Lts: V8 96	Concéntrico	<b>KGC0944</b>
---------------	-------------	----------------

**TORNADO**

1.0Lts: 02-09	Cil. Maestro	<b>KGM0712</b>
---------------	--------------	----------------

1.4Lts: 02-09	Cil. Maestro	<b>KGM0712</b>
---------------	--------------	----------------

1.8Lts: 02-09	Cil. Maestro	<b>KGM0712</b>
---------------	--------------	----------------

1.8Lts: 04-11	Conector	<b>KGV0589</b>
---------------	----------	----------------

1.8Lts: L4 SOHC 04-20	Concéntrico	<b>KGC1109</b>
-----------------------	-------------	----------------

1.8Lts: L4 SOHC 12-20	Collarín Mec.	<b>KCMGM01</b>
-----------------------	---------------	----------------

**TRACKER**

1.2Lts: L3 21-23	Cil. Maestro	<b>KGM5304</b>
------------------	--------------	----------------

**TRAX**



Modelo	Aplicación	# Seire
1.8Lts: 13-19	Conector	KGV0589
1.8Lts: L4 DOHC 13-20	Concéntrico	KGC0077
1.8Lts: L4 Gasolina 13-20	Cil. Maestro	KGM0800
<b>VAN</b>		
5.7Lts: V8 85-96	Cil. Esclavo	KGE0872
5.7Lts: V8 85-96	Cil. Maestro	KGM0097
<b>VECTRA</b>		
2.0Lts: V8 00-15	Concéntrico	KGC1220
<b>YUKON</b>		
4.3Lts: V6 96-98	Concéntrico	KGC0944
<b>Z24</b>		
3.1Lts: V6 92-96	Concéntrico	KGC1090
3.1Lts: V6 MPFI 92-94	Cil. Esclavo	KGE0871
<b>ZAFIRA</b>		
1.8Lts: L4 DOHC XE 02-06	Concéntrico	KGC1109
2.0Lts: V16 V1604-15	Concéntrico	KGC1220
L4 DOHC 02-03	Cil. Maestro	KGM0769
<b>CHRYSLER /DODGE</b>		
<b>ATOS</b>		
1.0Lts: 60 L4 5Vel. SOHC 01-04	Collarín Mec.	KCMCH01
1.0Lts: L4 SOHC 01-04	Collarín Mec.	KCMHY01
1.1Lts: 60 L4 5Vel. SOHC 05-12	Collarín Mec.	KCMCH01
1.1Lts: L4 SOHC 05-12	Collarín Mec.	KCMHY01

**ATTITUDE**

1.2Lts: L3 15-21	Collarín Mec.	KCMCH106
1.4Lts: L4 DOHC 06-12	Collarín Mec.	KCMCH107
1.6Lts: 12-17	Cil. Maestro	KCM2399
1.6Lts: L4 DOHC 06-12	Collarín Mec.	KCMCH107
1.6Lts: L4 DOHC 06-14	Collarín Mec.	KCMKIA01

**AVENGER**

2.0Lts: L4 95-99	Collarín Mec.	KCMCH76
------------------	---------------	---------

**B150**

3.9Lts: V6 92-93	Cil. Esclavo	KCE0881
------------------	--------------	---------

**B250**

3.9Lts: V6 92-93	Cil. Esclavo	KCE0881
------------------	--------------	---------

**CLUB CAB**

5.9Lts: V8 95-98	Collarín Mec.	KCMCH02
------------------	---------------	---------

**D100**

5.2Lts: V8 94-00	Collarín Mec.	KCMCH02
------------------	---------------	---------

**D150**

3.7Lts: L6 OHV 92-93	Cil. Esclavo	KCE0881
-------------------------	--------------	---------

3.9Lts: V6 92-93	Cil. Esclavo	KCE0881
------------------	--------------	---------

5.2Lts: V8 MPFI 94-00	Collarín Mec.	KCMCH02
--------------------------	---------------	---------

5.9Lts: V8 MPFI 94-02	Collarín Mec.	KCMCH02
--------------------------	---------------	---------

**D250**

3.9Lts: V6 92-93	Cil. Esclavo	KCE0881
------------------	--------------	---------

5.2Lts: 92-93	Power Ram Cil. Esclavo	KCE0881
---------------	------------------------	---------

5.2Lts: 92-93	Prospector Cil. Esclavo	KCE0881
---------------	-------------------------	---------



Modelo	Aplicación	# Seire
5.2Lts: V8 92-93	Cil. Esclavo	KCE0881
5.2Lts: V8 MPFI 94-00	Collarín Mec.	KCMCH02
5.9Lts: V8 88-92	Cil. Esclavo	KCE0877
5.9Lts: V8 MPFI 94-02	Collarín Mec.	KCMCH02
5.9Lts: V8 OHV 92-93	Adventure Cil. Esclavo	KCE0881
<b>D350</b>		
5.2Lts: V8 85-91	Cil. Esclavo	KCE0877
5.2Lts: V8 92-93	Cil. Esclavo	KCE0881
5.2Lts: V8 MPFI 94-00	Collarín Mec.	KCMCH02
5.9Lts: V8 88-93	Cil. Esclavo	KCE0877
5.9Lts: V8 MPFI 94-02	Collarín Mec.	KCMCH02
<b>D600</b>		
91-93	Collarín Mec.	KCM1087G
91-93	Collarín Mec.	KCM1171M
<b>DAKOTA</b>		
2.2Lts: L4 87-88	Cil. Esclavo	KCE0877
2.5Lts: L4 99-02, L4 OHV 95-98	Collarín Mec.	KCMCH02
3.9Lts: V6 01-03, V6 SOHC 92-99	Collarín Mec.	KCMCH02
3.9Lts: V6 88-91	Cil. Esclavo	KCE0877
4.7Lts: V8 01-06	Collarín Mec.	KCMCH02
5.2Lts: V8 94-99	Collarín Mec.	KCMCH02
<b>DART</b>		
1.4Lts: L4 13-16	Concéntrico	KCC0146
2.0Lts: L4 13	Concéntrico	KCC0146

2.4Lts: L4 12-16	Concéntrico	KCC0146
------------------	-------------	---------

## LeBARON

2.2Lts: 4 82-86	Collarín Mec.	KCM4007
-----------------	---------------	---------

2.5Lts: 4 86-87	Collarín Mec.	KCM4007
-----------------	---------------	---------

## MICROBUS

5.9Lts: V8 88-92	Cil. Esclavo	KCE0877
------------------	--------------	---------

5.9Lts: V8 94-98	Cil. Esclavo	KCE0881
------------------	--------------	---------

## NEON

2.0Lts: L4 5Vel. SE MPFI SOHC 94-05	Collarín Mec.	KCMCH76
-------------------------------------	---------------	---------

2.0Lts: L4 5Vel. LE MPFI SOHC 94-98	Collarín Mec.	KCMCH76
-------------------------------------	---------------	---------

2.0Lts: L4 5Vel. LX MPFI SOHC 94-98	Collarín Mec.	KCMCH76
-------------------------------------	---------------	---------

2.0Lts: L4 Turbo 01-04, L4 5Vel. MPFI SOHC 94-99	RT Collarín Mec.	KCMCH76
--	------------------	---------

## PT CRUISER

2.4Lts: L4 DOHC 01-09	Collarín Mec.	KCMCH76
-----------------------	---------------	---------

## RAM 1500

3.7Lts: 226 V6 03-10	LD Cil. Maestro	KCM0138
----------------------	-----------------	---------

3.9Lts: 239 V6 00-01	Pick up Cil. Maestro	KCM0103
----------------------	----------------------	---------

3.9Lts: V6 4Vel. MPFI 94-00	Pick up Collarín Mec.	KCMCH02
-----------------------------	-----------------------	---------

4.7Lts: V8 03-09	Cil. Maestro	KCM0138
------------------	--------------	---------

5.2Lts: V6 98-00	Cil. Maestro	KCM0103
------------------	--------------	---------

5.2Lts: V8 4Vel. MPFI 4x2 94-98, V8 4Vel. MPFI 4x4 94-00	Pick up Collarín Mec.	KCMCH02
--	-----------------------	---------



Modelo	Aplicación		# Seire			
5.2Lts: V8 MPFI 94-00		Cil. Esclavo	KCE0881	5.7Lts: 345 V8 03-08	Heavy duty	Cil. Maestro KCM0138
5.9Lts: 360 V8 99-00	Pick up	Cil. Maestro	KCM0103	5.7Lts: V8 11-15		Cil. Maestro KCM0138
5.9Lts: V8 MPFI 94-02		Cil. Esclavo	KCE0881	5.9Lts: V10 Diesel 03-04		Cil. Maestro KCM0138
8.0Lts: V10 98	Pick up	Cil. Maestro	KCM0103	5.9Lts: V8 94-02, V8 MPFI 96-02		Collarín Mec. KCMCH02
<b>RAM 2500</b>						
5.2Lts: 94-97	Limited	Cil. Esclavo	KCE0881	5.9Lts: V8 MPFI 94-02		Cil. Esclavo KCE0881
5.2Lts: V8 94-00		Collarín Mec.	KCMCH02	5.9Lts: V8 MPFI 94-02, 360 V8 00-04		Cil. Maestro KCM0103
5.2Lts: V8 MPFI 95-98	Limited	Collarín Mec.	KCMCH02	8.0Lts: V10 00-04		Cil. Maestro KCM0103
5.7Lts: V8 03-15		Cil. Maestro	KCM0138	8.0Lts: V10 03		Cil. Maestro KCM0138
5.9Lts: 4x4 94-97		Cil. Esclavo	KCE0881	<b>RAM 4000</b>		
5.9Lts: 94-97	Incluye Quad Cab	Cil. Esclavo	KCE0881	5.2Lts: V8 94-00		Collarín Mec. KCMCH02
5.9Lts: V8 98-00	Quad Cab	Collarín Mec.	KCMCH02	5.7Lts: V8 OHV 05-18		Cil. Maestro KCM0138
5.9Lts: V8 98-99		Cil. Maestro	KCM0103	5.9Lts: 95-02		Cil. Maestro KCM0103
5.9Lts: V8 Diesel 03-04		Cil. Maestro	KCM0138	5.9Lts: V8 MPFI 95-98	Club Cab	Cil. Maestro KCM0103
5.9Lts: V8 MPFI 96-02		Collarín Mec.	KCMCH02	5.9Lts: V8 MPFI 96-02		Collarín Mec. KCMCH02
8.0Lts: V8 Diesel 03		Cil. Maestro	KCM0138	<b>RAM 700</b>		
<b>RAM 3500</b>						
3.9Lts: 239 V6 00-04		Cil. Maestro	KCM0103	1.6Lts: DOHC 15-19		Concéntrico KFIC0965
5.2Lts: V8 94-00		Collarín Mec.	KCMCH02	<b>RAM CHARGER</b>		
5.2Lts: V8 MPFI 94-00		Cil. Esclavo	KCE0881	5.2Lts: V8 85-93		Cil. Esclavo KCE0877
5.2Lts: V8 MPFI 94-00		Cil. Maestro	KCM0103	<b>RAM FULL SIZE</b>		
5.2Lts: V8 MPFI 94-00		Cil. Maestro	KCM0103	3.9Lts: 239 V6 94-01		Cil. Maestro KCM0103
				5.2Lts: 360 V8 94-01		Cil. Maestro KCM0103



Modelo	Aplicación		# Seire
5.9Lts: L6 Diesel 94-01		Cil. Maestro	KCM0103
8.0Lts: V10 00		Cil. Maestro	KCM0103
<b>SEBRING</b>			
2.0Lts: L4 95-01	LX	Collarín Mec.	KCMCH76
<b>STRATUS</b>			
2.0Lts: L4 MPFI DOHC 95-06		Collarín Mec.	KCMCH76
<b>VERNA</b>			
1.5Lts: L4 SOHC 04-06		Collarín Mec.	KCMKIA01
1.6Lts: L4 04-06		Collarín Mec.	KCMCH107
1.6Lts: L4 DOHC 04-06		Collarín Mec.	KCMKIA01
<b>VISION</b>			
1.6Lts: L4 SOHC 16-18		Concéntrico	KFIC0965
<b>DINA</b>			
<b>Delfin</b>			
67-85		Collarín Mec.	KCM1171M
<b>Serie 500</b>			
67-85	ED32	Collarín Mec.	KCM1171M
67-85	ED35	Collarín Mec.	KCM1171M
Diesel 67-85	ED32	Collarín Mec.	KCM1087G
Diesel 67-85	ED35	Collarín Mec.	KCM1087G
<b>Serie 600</b>			
67-85		Collarín Mec.	KCM1171M
<b>Serie 631</b>			
70-74	C/31	Collarín Mec.	KCM1171M
74-88		Collarín Mec.	KCM1171G
<b>Serie 661</b>			

70-89	E1	Collarín Mec.	KCM1171M
70-89	G2	Collarín Mec.	KCM1171M
70-89	G3	Collarín Mec.	KCM1171M

<b>Serie 700</b>			
67-85		Collarín Mec.	KCM1171M

<b>Serie 861</b>			
74-88		Collarín Mec.	KCM1171G

<b>EAGLE</b>			
<b>TALON</b>			
2.0Lts: L4 SOHC 95-98		Collarín Mec.	KCMCH76

<b>FIAT</b>			
<b>500X</b>			
1.4Lts: L4 Turbo 14-18		Concéntrico	KCC0146
1.6Lts: L4 16-17		Concéntrico	KCC0146
2.4Lts: L4 16-18		Concéntrico	KCC0146

<b>ALBEA</b>			
1.8Lts: L4 SOHC 09-11		Concéntrico	KFIC0965

<b>IDEA ADVENTURE</b>			
1.8Lts: L4 08-09		Concéntrico	KFIC0965

<b>PALIO</b>			
1.6Lts: L4 DOHC 13-16	Adventure	Concéntrico	KFIC0965
1.8Lts: L4 SOHC 05-11	1.8R	Concéntrico	KFIC0965
1.8Lts: L4 SOHC 05-11	Adventure	Concéntrico	KFIC7419

<b>STRADA</b>			
---------------	--	--	--



Modelo	Aplicación	# Seire
1.6Lts: L4 16Valv. SOHC 12-14	Concéntrico	<b>KFIC0965</b>
1.8Lts: L4 8Valv. SOHC 07-11	Concéntrico	<b>KFIC0965</b>
<b>FORD</b>		
<b>AEROSTAR</b>		
2.3Lts: L4 86-87	Cil. Maestro	<b>KFM0270</b>
2.8Lts: V6 86	Cil. Maestro	<b>KFM0270</b>
3.0Lts: 182 V6 88-92	Concéntrico	<b>KFC0890</b>
3.0Lts: V6 86-88	Cil. Maestro	<b>KFM0270</b>
3.0Lts: V6 88-94	Concéntrico	<b>KFC0893</b>
3.0Lts: V6 88-94	Concéntrico	<b>KFC0511</b>
<b>BRONCO</b>		
2.0Lts: L4 84	II Cil. Esclavo	<b>KFE0485</b>
2.3Lts: L4 84	II Cil. Esclavo	<b>KFE0485</b>
2.3Lts: L4 88	II Concéntrico	<b>KFC0511</b>
2.3Lts: L4 88	II Concéntrico	<b>KFC0893</b>
2.8Lts: V6 Carburador 84	II Cil. Esclavo	<b>KFE0485</b>
2.9Lts: V6 88-90	II Concéntrico	<b>KFC0511</b>
2.9Lts: V6 88-90	II Concéntrico	<b>KFC0893</b>
2.9Lts: V6 88-90	II Cil. Maestro	<b>KFM0270</b>
2.9Lts: V6 88-90	II Concéntrico	<b>KFC0890</b>
3.8Lts: V8 84-86	Cil. Esclavo	<b>KFE0485</b>
4.9Lts: L6 87-93	Collarín Mec.	<b>KCMFD04</b>
4.9Lts: L6 88-92	Concéntrico	<b>KFC0890</b>
4.9Lts: L6 92	Cil. Maestro	<b>KFM0886</b>
4.9Lts: V8 84-86	Cil. Esclavo	<b>KFE0485</b>
4.9Lts: V8 93-94	Cil. Maestro	<b>KFM0887</b>

5.0Lts: 8 93	Cil. Esclavo	<b>KFE0891</b>
5.0Lts: L6 92	Cil. Maestro	<b>KFM0886</b>
5.0Lts: L6 L687-93	Collarín Mec.	<b>KCMFD04</b>
5.0Lts: V8 84-86	Cil. Esclavo	<b>KFE0485</b>
5.0Lts: V8 93-94	Cil. Maestro	<b>KFM0887</b>
5.8Lts: 8 93	Cil. Esclavo	<b>KFE0891</b>
5.8Lts: V8 84-86	Cil. Esclavo	<b>KFE0485</b>
5.8Lts: V8 88-89	Collarín Mec.	<b>KCMFD04</b>
5.8Lts: V8 93-94	Cil. Maestro	<b>KFM0887</b>
<b>COURIER</b>		
1.6Lts: L4 OHC 01-10	Concéntrico	<b>KFC1010</b>
1.6Lts: L4 OHC 01-10	Cil. Maestro	<b>KFMXS61</b>
1.6Lts: L4 OHC 01-15	Concéntrico	<b>KFCAM55</b>
1.6Lts: L4 OHC 11-15	Concéntrico	<b>KFC1210</b>
<b>CUSTOM</b>		
5.0Lts: V8 4Vel. XLT	Collarín Mec.	<b>KCMFD04</b> 91-97
5.8Lts: V8 4Vel.	Collarín Mec.	<b>KCMFD04</b> 91-97
5.8Lts: V8 4Vel. XLT	Collarín Mec.	<b>KCMFD04</b> 91-97
<b>E100</b>		
4.9Lts: L6 83-87	Collarín Mec.	<b>KCMFD04</b>
4.9Lts: L6 83-87	Cil. Esclavo	<b>KFE0485</b>
4.9Lts: L6 88-89	Concéntrico	<b>KFC0890</b>
5.0Lts: V8 83-86	Collarín Mec.	<b>KCMFD04</b>
5.0Lts: V8 83-86	Cil. Esclavo	<b>KFE0485</b>



Modelo	Aplicación	# Seire
5.0Lts: V8 88-89	Concéntrico	KFC0890
5.8Lts: V8 84-86	Collarín Mec.	KCMFD04
5.8Lts: V8 84-86	Cil. Esclavo	KFE0485
<b>E150</b>		
4.9Lts: L6 88-89	Concéntrico	KFC0890
5.0Lts: V8 87	Collarín Mec.	KCMFD04
<b>E250</b>		
4.2Lts: V6 OHV 98-99	Concéntrico	KFC0511
4.2Lts: V6 OHV 98-99	Concéntrico	KFC0893
4.9Lts: L6 83-87	Collarín Mec.	KCMFD04
4.9Lts: L6 83-87	Cil. Esclavo	KFE0485
4.9Lts: L6 88-89	Concéntrico	KFC0890
5.0Lts: V8 83-86	Cil. Esclavo	KFE0485
5.0Lts: V8 83-87	Collarín Mec.	KCMFD04
5.0Lts: V8 88-89	Concéntrico	KFC0890
5.8Lts: V8 84-86	Cil. Esclavo	KFE0485
5.8Lts: V8 84-86	Collarín Mec.	KCMFD04
<b>E350</b>		
4.9Lts: L6 83-87	Collarín Mec.	KCMFD04
4.9Lts: L6 83-87	Cil. Esclavo	KFE0485
4.9Lts: L6 88-89	Concéntrico	KFC0890
5.0Lts: V8 83-86	Cil. Esclavo	KFE0485
5.0Lts: V8 83-86	Collarín Mec.	KCMFD04
5.0Lts: V8 88-89	Concéntrico	KFC0890
5.8Lts: V8 84-86	Collarín Mec.	KCMFD04
5.8Lts: V8 84-86	Cil. Esclavo	KFE0485

## ECOSPORT

2.0Lts: L4 13-20	Cil. Maestro	KFM0443
2.0Lts: L4 DOHC 04-12	Cil. Maestro	KFM2S61
2.0Lts: L4 DOHC 04-13	Concéntrico	KFC1210
2.0Lts: L4 DOHC 04-13	Concéntrico	KFCAM55

## EXPLORER

4.0Lts: V6 90-92	Concéntrico	KFC0890
4.0Lts: V6 93-94	Cil. Maestro	KFM0578
4.0Lts: V6 93-97	Concéntrico	KFC0893
4.0Lts: V6 93-97	Concéntrico	KFC0511
4.0Lts: V6 95-97	Cil. Maestro	KFM0005

## F100

2.5Lts: L4 98-03	Concéntrico	KFC0511
2.5Lts: L4 98-03	Concéntrico	KFC0893
3.0Lts: V6 97-03	Concéntrico	KFC0893
3.0Lts: V6 97-03	Cil. Maestro	KFM0005
3.0Lts: V6 97-03	Concéntrico	KFC0511
3.8Lts: 84-86	Cil. Esclavo	KFE0485
4.9Lts: 84-86	Cil. Esclavo	KFE0485
4.9Lts: L6 83-87	Collarín Mec.	KCMFD04
4.9Lts: L6 88-92	Concéntrico	KFC0890
5.0Lts: 84-86	Cil. Esclavo	KFE0485
5.0Lts: V8 68-92	Collarín Mec.	KCM0201
5.0Lts: V8 83-86	Collarín Mec.	KCMFD04
5.8Lts: 84-86	Cil. Esclavo	KFE0485
5.8Lts: V8 84-86	Collarín Mec.	KCMFD04

## F150





Modelo	Aplicación		# Seire				
3.8Lts: V6 4Vel. 91-97		Collarín Mec.	<b>KCMFD04</b>	5.8Lts: 91-97	XLT	Cil. Maestro	<b>KFM0887</b>
3.8Lts: V6 91-97		Cil. Esclavo	<b>KFE0891</b>	5.8Lts: V8 88-92		Collarín Mec.	<b>KCMFD04</b>
3.8Lts: V6 91-97		Cil. Maestro	<b>KFM0887</b>	5.8Lts: V8 93-94		Cil. Esclavo	<b>KFE0891</b>
4.0Lts: V6 94-98		Concéntrico	<b>KFC0890</b>	5.8Lts: V8 93-94		Cil. Maestro	<b>KFM0887</b>
4.2Lts: V6 OHV 98-09	XL	Concéntrico	<b>KFC0511</b>	<b>F200</b>			
4.2Lts: V6 OHV 98-09	XL	Concéntrico	<b>KFC0893</b>	4.9Lts: V8 4Vel. 91-97		Collarín Mec.	<b>KCMFD04</b>
4.2Lts: V6 OHV 98-09	XL	Cil. Maestro	<b>KFM0019</b>	5.0Lts: V8 4Vel. 91-93		Collarín Mec.	<b>KCMFD04</b>
4.6Lts: V8 OHV 97-06	XLT	Concéntrico	<b>KFC0893</b>	5.0Lts: V8 92-93		Cil. Esclavo	<b>KFE0891</b>
4.6Lts: V8 OHV 97-06	XLT	Cil. Maestro	<b>KFM0019</b>	5.0Lts: V8 92-93		Cil. Maestro	<b>KFM0887</b>
4.6Lts: V8 OHV 97-06	XLT	Concéntrico	<b>KFC0511</b>	<b>F250</b>			
4.9Lts: 300 L6 92		Cil. Maestro	<b>KFM0886</b>	4.2Lts: V8 SOHC 98-09		Concéntrico	<b>KFC0511</b>
4.9Lts: L6 88-92		Concéntrico	<b>KFC0890</b>	4.2Lts: V8 SOHC 98-09		Concéntrico	<b>KFC0893</b>
4.9Lts: L6 95-97		Cil. Maestro	<b>KFM0887</b>	4.6Lts: 97-03		Concéntrico	<b>KFC0511</b>
4.9Lts: L6 95-97		Cil. Esclavo	<b>KFE0891</b>	4.6Lts: 97-03		Concéntrico	<b>KFC0893</b>
4.9Lts: V8 87-93		Collarín Mec.	<b>KCMFD04</b>	4.6Lts: V8 93-94, 281 V8 97		Cil. Maestro	<b>KFM0019</b>
4.9Lts: V8 87-93		Cil. Esclavo	<b>KFE0485</b>	4.9Lts: 300 L6 86- 92		Cil. Esclavo	<b>KFE0485</b>
5.0Lts: 302 V8 92		Cil. Maestro	<b>KFM0886</b>	4.9Lts: L6 87-93		Collarín Mec.	<b>KCMFD04</b>
5.0Lts: 88-93		Cil. Esclavo	<b>KFE0485</b>	5.0Lts: 302 V8 86- 92		Cil. Esclavo	<b>KFE0485</b>
5.0Lts: V8 88-93		Collarín Mec.	<b>KCMFD04</b>	5.0Lts: 302 V8 93- 98	LD	Cil. Maestro	<b>KFM0887</b>
5.0Lts: V8 93-94		Cil. Esclavo	<b>KFE0891</b>	5.0Lts: V8 4Vel. 88-97		Collarín Mec.	<b>KCMFD04</b>
5.0Lts: V8 93-94		Cil. Maestro	<b>KFM0887</b>	5.0Lts: V8 92-97		Cil. Esclavo	<b>KFE0891</b>
5.4Lts: 8 00-02		Collarín Mec.	<b>KCM4175</b>	5.0Lts: V8 92-97		Cil. Maestro	<b>KFM0887</b>
5.8Lts: 88-92		Cil. Esclavo	<b>KFE0485</b>	5.0Lts: V8 96-97		Concéntrico	<b>KFC0893</b>
5.8Lts: 91-97	XLT	Cil. Esclavo	<b>KFE0891</b>				



Modelo	Aplicación	# Seire			
5.0Lts: V8 96-97		Concéntrico	KFC0511	7.5Lts: 460 V8 93-94	Cil. Esclavo KFE0891
5.4Lts: 300 V8 99	Super Duty	Cil. Maestro	KFM0108	<b>F350</b>	
5.4Lts: 330 V8 97		Cil. Maestro	KFM0019	4.7Lts: V8 89-91	Cil. Esclavo KFE0485
5.4Lts: 330 V8 99		Cil. Maestro	KFM0108	4.9Lts: 91-97	Cil. Maestro KFM0887
5.4Lts: 330 V8 99-05	Super Duty	Cil. Esclavo	KFE0530	4.9Lts: 91-97	Cil. Esclavo KFE0891
5.4Lts: 8 99-02	Super Duty	Collarín Mec.	KCM4175	4.9Lts: L6 87-93	Collarín Mec. KCMFD04
5.8Lts: 89-91		Cil. Esclavo	KFE0485	4.9Lts: L6 88-92	Concéntrico KFC0890
5.8Lts: V8 4Vel. 91-97		Collarín Mec.	KCMFD04	5.0Lts: 91-97 XL	Cil. Esclavo KFE0891
5.8Lts: V8 92-97		Cil. Maestro	KFM0887	5.0Lts: 91-97 XL	Cil. Maestro KFM0887
5.8Lts: V8 92-97		Cil. Esclavo	KFE0891	5.0Lts: V8 4Vel. F. I. OHV 90-97	Collarín Mec. KCMFD04
5.8Lts: V8 95		Concéntrico	KFC0511	5.0Lts: V8 89-91	Cil. Esclavo KFE0485
5.8Lts: V8 95		Concéntrico	KFC0893	5.4Lts: 8 99-02 Super Duty	Collarín Mec. KCM4175
6.8Lts: 415 V10 00-07	Super Duty	Cil. Esclavo	KFE0530	5.4Lts: V8 SOHC 00-04	XL Cil. Esclavo KFE0530
6.8Lts: 415 V10 99	Super Duty	Cil. Maestro	KFM0019	5.4Lts: V8 SOHC 99-02	XLT Cil. Esclavo KFE0530
6.8Lts: 8 99-02	Super Duty	Collarín Mec.	KCM4175	5.4Lts: V8 SOHC 99-04	XL Cil. Maestro KFM0108
6.8Lts: V10 Gasolina 99-07	Super Duty	Cil. Maestro	KFM0108	5.4Lts: V8 SOHC 99-04	XLT Cil. Maestro KFM0108
7.3Lts: 445 V8 88-92		Cil. Esclavo	KFE0476	5.8Lts: V8 89-91	Cil. Esclavo KFE0485
7.3Lts: 445 V8 92-97		Cil. Maestro	KFM0886	5.8Lts: V8 95, 351 V8 96-97	Cil. Esclavo KFE0891
7.3Lts: 445 V8 93-94		Cil. Esclavo	KFE0891	5.8Lts: V8 OHV 88-97	XLT Collarín Mec. KCMFD04
7.3Lts: 445 V8 99	Super Duty	Cil. Maestro	KFM0019	5.8Lts: V8 OHV 95-98	Concéntrico KFC0893
7.3Lts: 8 99-03	Super Duty	Collarín Mec.	KCM4175	5.8Lts: V8 OHV 95-98	Concéntrico KFC0511
7.5Lts: 460 V8 86-92		Cil. Esclavo	KFE0476	6.8Lts: 8 99-02 Super Duty	Collarín Mec. KCM4175
7.5Lts: 460 V8 92-97		Cil. Maestro	KFM0886		



Modelo	Aplicación	# Seire			
7.3Lts: 445 V8 93-94		Cil. Esclavo	<b>KFE0891</b>	6.8Lts: V10 Gasolina 01-07	Super Duty Cil. Esclavo <b>KFE0530</b>
7.3Lts: 8 99-03	Super Duty	Collarín Mec.	<b>KCM4175</b>	6.8Lts: V10 Gasolina 99-07	Super Duty Cil. Maestro <b>KFM0108</b>
7.3Lts: TD 94-98		Cil. Maestro	<b>KFM0886</b>	7.3Lts: V8 Diesel 99-03	Super Duty Cil. Maestro <b>KFM0108</b>
7.3Lts: V8 Diesel 00-03	Super Duty	Cil. Maestro	<b>KFM0108</b>	<b>FIESTA</b>	
7.5Lts: 460 V8 93-94		Cil. Esclavo	<b>KFE0891</b>	1.3Lts: L4 01, 1299 L4 98-00	Cil. Maestro <b>KFMXS61</b>
7.5Lts: TD 94-98		Cil. Maestro	<b>KFM0886</b>	1.3Lts: L4 OHV 98-01	Concéntrico <b>KFC1010</b>
7.5Lts: V8 82-92		Cil. Esclavo	<b>KFE0476</b>	1.3Lts: L4 OHV 98-01	Concéntrico <b>KFCAM55</b>
<b>F450</b>				1.4Lts: 98-00	Cil. Maestro <b>KFMXS61</b>
5.0Lts: V8 84-86		Collarín Mec.	<b>KCMFD04</b>	1.4Lts: L4 DOHC 98-00	Concéntrico <b>KFC1010</b>
5.8Lts: V8 87-89		Collarín Mec.	<b>KCMFD04</b>	1.4Lts: L4 DOHC 98-00	Concéntrico <b>KFCAM55</b>
5.8Lts: V8 98		Concéntrico	<b>KFC0893</b>	1.6Lts: L4 11-17	Cil. Maestro <b>KFME3B1</b>
5.8Lts: V8 98		Cil. Maestro	<b>KFM0019</b>	1.6Lts: L4 DOHC 01-10	Cil. Maestro <b>KFM2S61</b>
5.8Lts: V8 98		Concéntrico	<b>KFC0511</b>	1.6Lts: L4 DOHC 01-11	Concéntrico <b>KFC1210</b>
6.8Lts: V10 MPFI 99-04	Super Duty	Cil. Esclavo	<b>KFE0530</b>	1.6Lts: L4 DOHC 01-11	Concéntrico <b>KFCAM55</b>
6.8Lts: V10 MPFI 99-04	Super Duty	Cil. Maestro	<b>KFM0108</b>	1.6Lts: L4 DOHC 11-19	Cil. Maestro <b>KFM0443</b>
6.9Lts: V8 Diesel 88-95		Cil. Esclavo	<b>KFE0476</b>	1.6Lts: L4 DOHC 11-19	Concéntrico <b>KFC0028</b>
7.3Lts: TD 88-95	Super Duty	Cil. Esclavo	<b>KFE0476</b>	2.0Lts: L4 DOHC 08	Concéntrico <b>KFC1210</b>
7.3Lts: V8 Diesel 00-03	Super Duty	Cil. Maestro	<b>KFM0108</b>	2.0Lts: L4 DOHC 08	Concéntrico <b>KFCAM55</b>
7.3Lts: V8 Turbo Diesel 00-03	XL Super Duty	Cil. Esclavo	<b>KFE0485</b>	<b>FIGO</b>	
7.5Lts: TD 88-95	Super Duty	Cil. Esclavo	<b>KFE0476</b>		
7.5Lts: V8 TD 97-98		Cil. Esclavo	<b>KFE0476</b>		



Modelo	Aplicación	# Seire			
1.5Lts: L3 19-21		Concéntrico	KFCH6B1	1.6Lts: L4 DOHC 03-11	Concéntrico KFCAM55
1.5Lts: L3 19-21		Cil. Maestro	KFMH1B1	1.6Lts: L4 DOHC 12-15	Concéntrico KFC0028
1.5Lts: L4 11-18		Cil. Maestro	KFME3B1	<b>KA</b>	
1.5Lts: L4 DOHC 16-18		Concéntrico	KFC0028	1.6Lts: L4 16Valv. DOHC 01-08	Cil. Maestro KFMXS61
<b>FOCUS</b>				1.6Lts: L4 DOHC 01-08	Concéntrico KFC1010
1.8Lts: Diesel 99- 01, L4 TDCi Diesel 01-04, L4 Turbo 98-04, L4 16Valv. 98-04		Concéntrico	KFC1200	1.6Lts: L4 DOHC 01-08	Concéntrico KFCAM55
2.0Lts: L4 99-05, L4 16Valv. 98-04		Concéntrico	KFC1200	<b>LOBO</b>	
2.0Lts: L4 00 ZX3		Concéntrico	KFC1200	4.6Lts: V8 SOHC 97-08	Concéntrico KFC0511
2.0Lts: L4 05-08 SE		Cil. Maestro	KFM2185	4.6Lts: V8 SOHC 97-08	Concéntrico KFC0893
2.0Lts: L4 05-08 LX		Cil. Maestro	KFM2185	5.8Lts: 210 V8 95 F250	Collarín Mec. KCMFD04
2.0Lts: L4 07-16		Cil. Maestro	KFM2185	<b>MICROBUS</b>	
2.0Lts: L4 DOHC 05-08, L4 OHV 00		Concéntrico	KFCAM55	5.8Lts: V8 OHV 89-97	Collarín Mec. KCMFD04
2.0Lts: L4 DOHC ZX3		Cil. Maestro	KFM1133	<b>P350</b>	
2.0Lts: L4 DOHC SVT		Cil. Maestro	KFM1133	5.8Lts: V8 OHV 89-97	Collarín Mec. KCMFD04
2.0Lts: L4 DOHC 05-08		Concéntrico	KFC1210	5.8Lts: V8 OHV 89-97	Cil. Esclavo KFE0891
2.0Lts: L4 DOHC 99-04		Cil. Maestro	KFM1133	5.8Lts: V8 OHV 89-97	Cil. Maestro KFM0887
2.0Lts: L4 OHV 00		Concéntrico	KFC1010	<b>RANGER</b>	
<b>IKON</b>				2.0Lts: Diesel 20	Cil. Maestro KFM4927
1.6Lts: L4 DOHC 02-11		Concéntrico	KFC1010	2.0Lts: L4 83-84	Collarín Mec. KCMFD04
1.6Lts: L4 DOHC 03-11		Cil. Maestro	KFMXS61	2.0Lts: L4 83-84	Cil. Esclavo KFE0485
				2.0Lts: L4 83-85	Cil. Maestro KFM0270



Modelo	Aplicación		# Seire				
2.0Lts: L4 88		Concéntrico	<b>KFC0890</b>	2.5Lts: L4 98-01	XL	Concéntrico	<b>KFC0511</b>
2.2Lts: Diesel 15-18		Cil. Maestro	<b>KFM0434</b>	2.5Lts: L4 98-01	XL	Concéntrico	<b>KFC0893</b>
2.2Lts: Diesel 20		Cil. Maestro	<b>KFM4927</b>	2.8Lts: V6 83-84		Cil. Esclavo	<b>KFE0485</b>
2.2Lts: L4 11-19		Cil. Esclavo	<b>KFE0412</b>	2.8Lts: V6 83-84		Collarín Mec.	<b>KCMFD04</b>
2.2Lts: L4 83-84		Cil. Maestro	<b>KFM0270</b>	2.8Lts: V6 83-85		Cil. Maestro	<b>KFM0270</b>
2.2Lts: L4 Diesel 15-17		Concéntrico	<b>KFC3487</b>	2.9Lts: L4 87-93		Cil. Maestro	<b>KFM0270</b>
2.3Lts: 96-97	XL	Cil. Maestro	<b>KFM0579</b>	2.9Lts: V6 88-92		Concéntrico	<b>KFC0890</b>
2.3Lts: L4 83-84		Collarín Mec.	<b>KCMFD04</b>	3.0Lts: 96	XLT	Cil. Maestro	<b>KFM0579</b>
2.3Lts: L4 83-84		Cil. Esclavo	<b>KFE0485</b>	3.0Lts: 97	XL	Cil. Maestro	<b>KFM0579</b>
2.3Lts: L4 83-87		Cil. Maestro	<b>KFM0270</b>	3.0Lts: V6 90-92, 182 V6 93-94		Cil. Maestro	<b>KFM0578</b>
2.3Lts: L4 88-92	XL	Concéntrico	<b>KFC0890</b>	3.0Lts: V6 90-94		Concéntrico	<b>KFC0890</b>
2.3Lts: L4 93-94		Cil. Maestro	<b>KFM0579</b>	3.0Lts: V6 93-94		Concéntrico	<b>KFC0893</b>
2.3Lts: L4 DOHC 00-12	XL	Concéntrico	<b>KFC0893</b>	3.0Lts: V6 93-94		Concéntrico	<b>KFC0511</b>
2.3Lts: L4 DOHC 00-12	XL	Concéntrico	<b>KFC0511</b>	3.0Lts: V6 95-03		Cil. Maestro	<b>KFM0005</b>
2.3Lts: L4 OHV 93-94		Concéntrico	<b>KFC0893</b>	3.0Lts: V6 95-05	XL	Concéntrico	<b>KFC0893</b>
2.3Lts: L4 OHV 93-94		Concéntrico	<b>KFC0511</b>	3.0Lts: V6 95-05	XL	Concéntrico	<b>KFC0511</b>
2.3Lts: L4 OHV 95-97	XL	Concéntrico	<b>KFC0893</b>	3.0Lts: V6 97-08	XLT	Concéntrico	<b>KFC0893</b>
2.3Lts: L4 OHV 95-97	XL	Concéntrico	<b>KFC0511</b>	3.0Lts: V6 97-08	XLT	Concéntrico	<b>KFC0511</b>
2.5Lts: 11-17	(ARG)	Cil. Maestro	<b>KFM0434</b>	3.2Lts: Diesel 17-20		Cil. Maestro	<b>KFM0434</b>
2.5Lts: 96-97	XL	Cil. Maestro	<b>KFM0579</b>	3.2Lts: L5 Diesel 11-19		Cil. Esclavo	<b>KFE0412</b>
2.5Lts: L4 02-03		Concéntrico	<b>KFC0511</b>	4.0Lts: 90-94		Concéntrico	<b>KFC0890</b>
2.5Lts: L4 02-03		Concéntrico	<b>KFC0893</b>	4.0Lts: V6 00-03		Cil. Maestro	<b>KFM0124</b>
2.5Lts: L4 11-20		Cil. Esclavo	<b>KFE0412</b>	4.0Lts: V6 90-11		Concéntrico	<b>KFC0893</b>
				4.0Lts: V6 90-11		Concéntrico	<b>KFC0511</b>
				4.0Lts: V6 90-93, 245 V6 94		Cil. Maestro	<b>KFM0578</b>
				4.0Lts: V6 95-97		Cil. Maestro	<b>KFM0005</b>



Modelo	Aplicación	# Seire
<b>THUNDERBIRD</b>		
2.3Lts: L4 87-88	Cil. Esclavo	KFE0485
3.8Lts: V6 88-90	Concéntrico	KFC0890
3.8Lts: V6 90-94	SC Concéntrico	KFC0890
5.0Lts: V8 OHV 90-94	Concéntrico	KFC0890
<b>TRANSIT</b>		
1.8Lts: L4 Diesel 02, L4 TDCi Diesel 02, L4 16Valv. 02	Concéntrico	KFC1200
2.0Lts: 00-06	Concéntrico	KFC3485
2.2Lts: 06	Concéntrico	KFC3485
2.2Lts: Diesel 07-13	Cil. Esclavo	KFE0412
2.2Lts: L4 5Vel. TDCi DOHC Diesel 07-11	Cil. Maestro	KFM2257
2.3Lts: 00-06	Cil. Esclavo	KFE0412
2.5Lts: 00-06	Cil. Esclavo	KFE0412
<b>VANETTE</b>		
5.8Lts: V8 OHV 91-97	MICROBUS Collarín Mec.	KCMFD04
5.8Lts: V8 OHV 91-97	MICROBUS Cil. Maestro	KFM0887
<b>HONDA</b>		
<b>CIVIC</b>		
1.5Lts: 4 93-95	Collarín Mec.	KCM4122
1.6Lts: 4 93-00	Collarín Mec.	KCM4122
1.8Lts: L4 06-15	Cil. Esclavo	KHE1023
<b>CR-Z</b>		
1.5Lts: L4 11-16	Cil. Esclavo	KHE1023

<b>FIT</b>		
1.5Lts: L4 09-19	Cil. Esclavo	KHE1023
<b>PASSPORT</b>		
3.2Lts: 3165 V6 SOHC Gasolina 94-97	Cil. Maestro	KGM2188
<b>HYUNDAI</b>		
<b>ACCENT</b>		
1.6Lts: L4 18	Collarín Mec.	KCMCH107
<b>Creta</b>		
1.6Lts: 4 17-22	Concéntrico	KHYC1421
<b>ELANTRA</b>		
1.8Lts: L4 15-16	Collarín Mec.	KCMCH107
2.0Lts: L4 17-20	Collarín Mec.	KCMCH107
<b>GRAND i10</b>		
1.2Lts: L4 DOHC 15-18	Collarín Mec.	KCMCH01
1.2Lts: L4 DOHC 15-20	Collarín Mec.	KCMHY01
1.2Lts: L4 DOHC GL 15-20	Collarín Mec.	KCMHY01
1.2Lts: L4 DOHC GLS 15-20	Collarín Mec.	KCMHY01
<b>i10</b>		
1.1Lts: L4 SOHC 12-14	Collarín Mec.	KCMHY01
1.1Lts: L4 SOHC 12-14	Collarín Mec.	KCMCH01
<b>ISUZU</b>		
<b>AMIGO</b>		



Modelo	Aplicación	# Seire
2.6Lts: 2559 L4 SOHC Gasolina 90-94	Cil. Maestro	<b>KGM2188</b>

### HOMBRE

2.2Lts: L4 98-02	Cil. Maestro	<b>KGM0153</b>
4.3Lts: V6 98-99	Cil. Maestro	<b>KGM0153</b>

### PICK UP

2.6Lts: 2559 L4 SOHC Gasolina 88-94	Cil. Maestro	<b>KGM2188</b>
---	--------------	----------------

### RODEO

2.6Lts: 2259 L4 SOHC Gasolina 94-97, 2259 L4 RWD SOHC Gasolina 91-92	Cil. Maestro	<b>KGM2188</b>
--	--------------	----------------

### TROOPER

3.2Lts: 3165 V6 SOHC Gasolina 92-97	Cil. Maestro	<b>KGM2188</b>
---	--------------	----------------

### JEEP

#### CHEROKEE

2.0Lts: L4 15-16	Concéntrico	<b>KCC0146</b>
2.2Lts: L4 Diesel 15-16	Concéntrico	<b>KCC0146</b>
2.5Lts: L4 94-00	Collarín Mec.	<b>KCMCH02</b>
4.0Lts: L6 OHV 94-01	Collarín Mec.	<b>KCMCH02</b>

### LIBERTY

2.4Lts: L4 02-04	Collarín Mec.	<b>KCMCH02</b>
3.7Lts: V6 02-04	Collarín Mec.	<b>KCMCH02</b>

### RENEGADE

1.4Lts: L4 15-19	Concéntrico	<b>KCC0146</b>
------------------	-------------	----------------

### TJ

2.5Lts: L4 97-02	Collarín Mec.	<b>KCMCH02</b>
4.0Lts: L6 97-06	Collarín Mec.	<b>KCMCH02</b>

### WRANGLER

2.4Lts: L4 OHV 03-06	Collarín Mec.	<b>KCMCH02</b>
2.5Lts: L4 OHV 94-02	Collarín Mec.	<b>KCMCH02</b>
3.8Lts: V6 OHV 07-11	Unlimited X Collarín Mec.	<b>KCMCH02</b>
4.0Lts: L6 OHV 94-06	Collarín Mec.	<b>KCMCH02</b>

### YJ

2.5Lts: L4 94-95	Collarín Mec.	<b>KCMCH02</b>
4.0Lts: L6 94	Collarín Mec.	<b>KCMCH02</b>

### KIA

#### RIO

1.6Lts: 12-17	Cil. Maestro	<b>KCM2399</b>
1.6Lts: L4 16-17	Collarín Mec.	<b>KCMCH107</b>
1.6Lts: L4 16-17	Collarín Mec.	<b>KCMKIA01</b>

### SOUL

1.6Lts: L4 16-18	Collarín Mec.	<b>KCMCH107</b>
1.6Lts: L4 DOHC 16-17	Collarín Mec.	<b>KCMKIA01</b>

### LAND ROVER

#### DEFENDER

2.2Lts: L4 Diesel 12-16	Concéntrico	<b>KFC3487</b>
2.4Lts: L4 Diesel 11-12	Concéntrico	<b>KFC3487</b>

### MAZDA



Modelo	Aplicación	# Seire
<b>2</b>		
1.5Lts: L4 Gasolina 11-14	Cil. Esclavo	KME3081
<b>3</b>		
2.0Lts: L4 06-13	Cil. Maestro	KFM2185
2.3Lts: L4 06-09	Cil. Maestro	KFM2185
2.3Lts: L4 TDI 08- 13	Speed Cil. Maestro	KFM2185
2.5Lts: L4 10-13	Cil. Maestro	KFM2185
2.5Lts: L4 14-18	Cil. Esclavo	KME1920
<b>5</b>		
2.3Lts: L4 06-10	Cil. Maestro	KFM2185
<b>B2000</b>		
2.0Lts: L4 86-87	Cil. Maestro	KMM2558
2.0Lts: L4 Gasolina 86-87	Cil. Esclavo	KME3551
<b>B2200</b>		
2.2Lts: L4 87-93	Cil. Maestro	KMM2558
2.2Lts: L4 Gasolina 87-93	Cil. Esclavo	KME3551
<b>B2300</b>		
2.3Lts: L4 01-08	Concéntrico	KFC0511
2.3Lts: L4 01-08	Concéntrico	KFC0893
<b>B2500</b>		
3.0Lts: V6 94-07	Concéntrico	KFC0511
3.0Lts: V6 94-07	Concéntrico	KFC0893
<b>B2600</b>		
2.6Lts: L4 87-93	Cil. Maestro	KMM2558
<b>B3000</b>		
3.0Lts: V6 94-07	Concéntrico	KFC0511

3.0Lts: V6 94-07	Concéntrico	KFC0893
------------------	-------------	---------

**B4000**

4.0Lts: V6 94-09	Concéntrico	KFC0511
------------------	-------------	---------

4.0Lts: V6 94-09	Concéntrico	KFC0893
------------------	-------------	---------

**CX-3**

2.0Lts: L4 16-21	Cil. Esclavo	KME1920
------------------	--------------	---------

**CX-5**

2.0Lts: L4 13-16	Cil. Esclavo	KME1920
------------------	--------------	---------

2.5Lts: L4 14-16	Cil. Esclavo	KME1920
------------------	--------------	---------

**NAVAJO**

4.0Lts: V6 93-94	Concéntrico	KFC0511
------------------	-------------	---------

4.0Lts: V6 93-94	Concéntrico	KFC0893
------------------	-------------	---------

**MERCEDES BENZ**
**A160**

1.6Lts: L4 SOHC 00-05	Concéntrico	KMEC1815
--------------------------	-------------	----------

**CLASE B**

2.0Lts: L4 SOHC 06-11	Concéntrico	KMEC1815
--------------------------	-------------	----------

**DC OM 904**

Diesel 98-04	Collarín Mec.	KSN0211
--------------	---------------	---------

**DC OM 906**

98-04	Concéntrico	KMC6615
-------	-------------	---------

Diesel 98-04	Collarín Mec.	KSN0211
--------------	---------------	---------

**L**

OM366 6 92-98	Concéntrico	RDH1501
---------------	-------------	---------

**LO**

OM366 6 92-01	Concéntrico	RDH1501
---------------	-------------	---------

**TORINO**



Modelo	Aplicación	# Seire
OM904 4 98-05, OM906 6	Concéntrico	RDH1512
<b>MERCURY</b>		
<b>COUGAR</b>		
3.8Lts: V6 89-97	Concéntrico	KFC0890
4.6Lts: V8 94-97	Concéntrico	KFC0890
5.0Lts: V8 89-94	Concéntrico	KFC0890
<b>MITSUBISHI</b>		
<b>ECLIPSE</b>		
2.0Lts: L4 16Valv. DOHC 95-99	Collarín Mec.	KCMCH76
<b>L200</b>		
2.4Lts: Gasolina 08-18	Cil. Esclavo	KME1578
2.4Lts: L4 DOHC Gasolina 08-18	Cil. Maestro	KMM5036
2.5Lts: Diesel 04- 18	Cil. Esclavo	KME0832
2.5Lts: L4 DOHC Diesel 08-18	Cil. Maestro	KMMA015
<b>MIRAGE</b>		
1.2Lts: L3 15-20	Collarín Mec.	KCMCH106
<b>NISSAN</b>		
<b>200SX</b>		
1.6Lts: L4 95-98	Collarín Mec.	KCMNS01
2.0Lts: 1952 L4 80-81	Cil. Maestro	KNM2516
2.0Lts: L4 16Valv. F. I. DOHC 82-84	Collarín Mec.	KCMNS405
2.2Lts: 2187 L4 82-83	Cil. Maestro	KNM2516
3.0Lts: V6 87-88	Cil. Esclavo	KNE3541

<b>210</b>			
1.4Lts: 1393 L4 79-82		Cil. Maestro	KNM2516
1.4Lts: L4 79-82		Collarín Mec.	KCMNS21
1.5Lts: 1488 L4 82		Cil. Maestro	KNM2516
1.5Lts: L4 79-82		Collarín Mec.	KCMNS21
<b>240</b>			
2.4Lts: 2389 L4 SX 89-95		Cil. Maestro	KNM2516
2.4Lts: 4 91-98 SX		Cil. Esclavo	KNE3507
2.4Lts: L4 89-98, L4 5Vel. 91-94 SX		Collarín Mec.	KCMNS405
<b>280</b>			
2.8Lts: 2753 L6 ZX 79-83		Cil. Maestro	KNM2516
2.8Lts: 6 82-83 ZX		Cil. Esclavo	KNE3507
<b>300</b>			
3.0Lts: 2960 V6 ZX 84-89		Cil. Maestro	KNM2516
<b>310</b>			
1.4Lts: 1393 L4 79-80		Cil. Maestro	KNM2516
1.5Lts: 1498 L4 81-82		Cil. Maestro	KNM2516
1.5Lts: L4 82-83		Collarín Mec.	KCMNS21
1.6Lts: L4 82-83		Collarín Mec.	KCMNS21
<b>620</b>			
1.6Lts: L4 PICK UP Gasolina 72-73		Cil. Esclavo	KNE3509
2.0Lts: L4 Gasolina 75-79		Cil. Esclavo	KNE3509
<b>720</b>			



Modelo	Aplicación		# Seire
2.0Lts: 1952 L4 80-86		Cil. Maestro	KNM2516
2.0Lts: L4 RWD Gasolina 80-86		Cil. Esclavo	KNE3509
2.2Lts: 2164 L4 Diesel 81-83		Cil. Maestro	KNM2516
2.2Lts: L4 RWD Diesel 81-83		Cil. Esclavo	KNE3509
2.4Lts: 2389 L4 83-86		Cil. Maestro	KNM2516
2.4Lts: L4 5Vel. 95-08	PICK UP	Collarín Mec.	KCMNS03
2.4Lts: L4 Gasolina 83-86		Cil. Esclavo	KNE3509
2.5Lts: 2488 L4 Diesel 83-86		Cil. Maestro	KNM2516
2.5Lts: L4 RWD Diesel 83-86		Cil. Esclavo	KNE3509
<b>810</b>			
2.4Lts: L4 82-83		Collarín Mec.	KCMNS21
2.4Lts: L6 81		Cil. Maestro	KNM2516
2.8Lts: L6 81		Cil. Maestro	KNM2516
<b>ALMERA</b>			
1.8Lts: L4 01-05		Collarín Mec.	KCMNS01
<b>ALTIMA</b>			
2.4Lts: L4 16Valv. DOHC 93-98		Collarín Mec.	KCMNS405
<b>APRIO</b>			
1.6Lts: K4M L4 5Vel. 02-10		Collarín Mec.	KCMNS02
<b>AXXESS</b>			
2.4Lts: L4 16Valv. DOHC 90-91		Collarín Mec.	KCMNS405

## D21

2.4Lts: L4 4WD 86-94		Cil. Esclavo	KNE3541
2.4Lts: L4 94-15	DOBLE CABINA	Cil. Esclavo	KNE3541
2.4Lts: L4 RWD 86-94		Cil. Esclavo	KNE3529
3.0Lts: V6 4WD 90-94		Cil. Esclavo	KNE3541

## ESTAQUITAS

1.5Lts: L4 82-83	310	Collarín Mec.	KCMNS21
1.6Lts: L4 82-83	310	Collarín Mec.	KCMNS21
1.8Lts: L4 4Vel. 84-93		Collarín Mec.	KCMNS405
1.8Lts: L4 OHV 84-93		Collarín Mec.	KCMNS03
2.4Lts: L4 4Vel. 12Valv. 84-93		Collarín Mec.	KCMNS405

## FRONTIER

2.0Lts: L4 DOHC 00-08		Collarín Mec.	KCMNS03
2.4Lts: L4 5Vel. 00-12		Collarín Mec.	KCMNS03
2.5Lts: L4 DOHC 15-19		Collarín Mec.	KCMNS74

## HIKARI

1.5Lts: L4 4Vel. 87-93	COUPE	Collarín Mec.	KCMNS21
1.6Lts: L4 4Vel. 87-93	COUPE	Collarín Mec.	KCMNS21
1.6Lts: L4 5Vel. 87-91	TURBO	Collarín Mec.	KCMNS21

## ICHI VAN



Modelo	Aplicación	# Seire
1.8Lts: L4 87-90	Collarín Mec.	KCMNS405
1.8Lts: L4 88-94	Collarín Mec.	KCMNS03
2.4Lts: L4 5Vel. 92-94	Collarín Mec.	KCMNS03
<b>Juke</b>		
1.6Lts: 1598 L4 Gasolina 12-13	Cil. Maestro	KNM0KM0
<b>KICKS</b>		
1.6Lts: L4 DOHC 17-20	Concéntrico	KNC1121
<b>LUCINO</b>		
1.6Lts: L4 5Vel. 96-00	GSE Collarín Mec.	KCMNS21
1.6Lts: L4 DOHC 96-00	GSE Collarín Mec.	KCMNS01
2.0Lts: L4 96-00	GSR Collarín Mec.	KCMNS01
<b>MARCH</b>		
1.6Lts: HRD16DE L4 DOHC Gasolina 12-20	Concéntrico	KNC1121
1.6Lts: HRD16DE L4 DOHC Gasolina 12-20	Cil. Maestro	KNM01HK
<b>MAXIMA</b>		
2.4Lts: 2393 L6 82-84	Cil. Maestro	KNM2516
2.4Lts: 6 83-84	Cil. Esclavo	KNE3507
2.8Lts: 2793 L6 82-83	Cil. Maestro	KNM2516
3.0Lts: 2960 V6 85-94	Cil. Maestro	KNM2516
<b>MICRA</b>		

1.4Lts: L4 16Valv. DOHC 05-07	Concéntrico	KNC1121
----------------------------------	-------------	---------

**NINJA**

1.6Lts: L4 5Vel. 86-88, E16 L4 87	Collarín Mec.	KCMNS21
--------------------------------------	---------------	---------

**NOTE**

1.6Lts: 1598 L4 14-17	Concéntrico	KNC1121
--------------------------	-------------	---------

**NP300**

2.4Lts: L4 09-15	Chasis Cabina	Cil. Esclavo	KNE3541
------------------	------------------	--------------	---------

2.4Lts: L4 DOHC 08-15	D22	Collarín Mec.	KCMNS74
--------------------------	-----	---------------	---------

2.5Lts: L4 DOHC 16-19	D23	Collarín Mec.	KCMNS74
--------------------------	-----	---------------	---------

2.5Lts: L4 TSI Diesel 09-15	Pick up	Cil. Esclavo	KNE3052
--------------------------------	---------	--------------	---------

2.5Lts: L4 Turbo Diesel 08-15	D22	Collarín Mec.	KCMNS73
----------------------------------	-----	---------------	---------

**NV350**

2.5Lts: L4 Diesel 14-19		Cil. Esclavo	KNE3052
----------------------------	--	--------------	---------

2.5Lts: L4 DOHC 12-19		Collarín Mec.	KCMNS74
--------------------------	--	---------------	---------

2.5Lts: L4 DOHC 14-16		Collarín Mec.	KCMNS03
--------------------------	--	---------------	---------

**PATHFINDER**

2.4Lts: L4 86-93		Collarín Mec.	KCMNS03
------------------	--	---------------	---------

2.4Lts: V6 87		Cil. Esclavo	KNE3541
---------------	--	--------------	---------

3.0Lts: V6 87-95		Cil. Esclavo	KNE3541
------------------	--	--------------	---------

**PICK UP**

1.8Lts: L4 84-92		Cil. Esclavo	KNE3529
------------------	--	--------------	---------



Modelo	Aplicación	# Seire			
2.4Lts: L4 5Vel. 91-08	Doble cabina	Collarín Mec.	<b>KCMNS03</b>	1.7Lts: L4 Diesel 83-86	Collarín Mec. <b>KCMNS21</b>
2.4Lts: L4 95-15		Cil. Esclavo	<b>KNE3541</b>	1.8Lts: 1798 L4 Gasolina 15-17	Cil. Maestro <b>KNM0KM0</b>
2.4Lts: L4 95-97		Cil. Esclavo	<b>KNE3529</b>	1.8Lts: L4 DOHC 16-17	Concéntrico <b>KNC4544</b>
3.0Lts: L4 5Vel. 94-96		Collarín Mec.	<b>KCMNS03</b>	2.0Lts: L4 DOHC 07-15	Concéntrico <b>KNC4544</b>
3.0Lts: V6 95		Cil. Esclavo	<b>KNE3541</b>	2.0Lts: L4 DOHC GSS 96-01	Collarín Mec. <b>KCMNS01</b>
<b>PLATINA</b>					
1.6Lts: K4M L4 16Valv. DOHC 02- 10		Collarín Mec.	<b>KCMNS02</b>	<b>STANZA</b>	
2.0Lts: 1974 L4 Cil. Maestro <b>KNM2516</b> 87-89					
2.4Lts: 2389 L4 Cil. Maestro <b>KNM2516</b> 90-92					
<b>PULSAR</b>					
1.5Lts: L4 83-86		Collarín Mec.	<b>KCMNS21</b>	<b>TiiDA</b>	
1.6Lts: L4 82-86		Collarín Mec.	<b>KCMNS21</b>	1.6Lts: HRD16DE L4 Gasolina 13-18	Cil. Maestro <b>KNM0KM0</b>
1.6Lts: L4 87-90, E16 L4 87-90		Collarín Mec.	<b>KCMNS01</b>	1.6Lts: HRD16DE L4 SOHC 13-18	Concéntrico <b>KNC1121</b>
<b>SAKURA</b>					
1.8Lts: L4 82-87		Collarín Mec.	<b>KCMNS405</b>	1.8Lts: HRD18DE L4 Gasolina 06-18	Cil. Maestro <b>KNM0KM0</b>
<b>SAMURAI</b>					
1.8Lts: L4 81-87		Collarín Mec.	<b>KCMNS405</b>	1.8Lts: HRD18DE L4 SOHC 06-18	Concéntrico <b>KNC4544</b>
<b>SENTRA</b>					
1.5Lts: L4 82-85		Collarín Mec.	<b>KCMNS21</b>	<b>TSUBAME</b>	
1.6Lts: E16 L4 86- 03, GA16 L4 86- 03, GA16DE L4 86-03		Collarín Mec.	<b>KCMNS01</b>	1.6Lts: L4 F. I. DOHC 93-05	Collarín Mec. <b>KCMNS01</b>
1.6Lts: L4 5Vel. F. GST I. DOHC 96-00		Collarín Mec.	<b>KCMNS01</b>	<b>TSURU I</b>	
1.6Lts: L4 5Vel. F. GSX I. DOHC 98		Collarín Mec.	<b>KCMNS01</b>	1.5Lts: E15 L4 4Vel. 84	GUAYIN Collarín Mec. <b>KCMNS21</b>
1.6Lts: L4 82-85		Collarín Mec.	<b>KCMNS21</b>	1.5Lts: E15 L4 4Vel. 84-85	Collarín Mec. <b>KCMNS21</b>
				1.6Lts: E16 L4 4Vel. 86-87	Collarín Mec. <b>KCMNS21</b>



Modelo	Aplicación		# Seire
1.6Lts: E16 L4 4Vel. 86-87	GUAYIN	Collarín Mec.	KCMNS21
<b>TSURU II</b>			
1.6Lts: E16 L4 4Vel. 88-91		Collarín Mec.	KCMNS21
<b>TSURU III</b>			
1.6Lts: L4 92-17		Collarín Mec.	KCMNS01
<b>URVAN</b>			
2.4Lts: 02-07		Cil. Maestro	KNM2198
2.4Lts: L4 5Vel. DOHC 02-15		Collarín Mec.	KCMNS03
2.5Lts: L4 Diesel 14-19, L4 DOHC 14-19	NV350	Cil. Esclavo	KNE3052
2.5Lts: L4 DOHC 02-12		Collarín Mec.	KCMNS74
2.5Lts: L4 DOHC Gasolina 08-13		Cil. Esclavo	KNE3052
3.0Lts: L4 TDI DOHC 08-13		Collarín Mec.	KCMNS73
3.0Lts: L4 TSI 08- 13		Cil. Esclavo	KNE3052
<b>VAN</b>			
2.4Lts: 4 87-88		Cil. Esclavo	KNE3507
<b>VANETTE</b>			
5.7Lts: V8 95-02		Concéntrico	KGC0944
<b>V-Drive</b>			
1.6Lts: L4 DOHC 20-22		Concéntrico	KNC1121
<b>VERSA</b>			
1.6Lts: HRD16DE L4 DOHC 12-20		Concéntrico	KNC1121

1.6Lts: HRD16DE  
L4 DOHC  
Gasolina 12-20

Cil. Maestro **KNM01HK**

**X TERRA**

1.6Lts: L4 4Vel.  
DOHC 99-04

Collarín Mec. **KCMNS03**

**OLDSMOBILE**
**ACHIEVA**

95-97

Concéntrico **KGC1090**

**CUTLASS**

2.8Lts: 87-90

Eurosport  
Oldsmobile  
Cil. Esclavo **KGE0870**

3.1Lts: 87-90

Eurosport  
Oldsmobile  
Cil. Esclavo **KGE0870**

3.1Lts: V6 89-94

Cil. Esclavo **KGE0871**

**PEUGEOT**
**206**

1.4Lts: L4 5Vel.  
8Valv. SOHC 00-  
09

Collarín Mec. **KCMPU400**

1.6Lts: 110 L4  
5Vel. 16Valv.  
DOHC 01-09

Collarín Mec. **KCMPU400**

1.6Lts: L4 8Valv. XS  
SOHC 01

Collarín Mec. **KCMPU400**

**207**

1.6Lts: DOHC 09-  
11

SEDAN Collarín Mec. **KCMPU411**

1.6Lts: DOHC 09-  
11

Trendy Collarín Mec. **KCMPU411**

1.6Lts: DOHC 09-  
11

Compact Collarín Mec. **KCMPU411**



Modelo	Aplicación	# Seire
<b>301</b>		
1.6Lts: L4 DOHC 13-20	Collarín Mec.	KCMPU411
<b>GRAND RAID</b>		
1.6Lts: 110 L4 5Vel. DOHC 07- 12	Collarín Mec.	KCMPU411
<b>PARTNER</b>		
1.6Lts: 110 L4 5Vel. DOHC 02- 12	Collarín Mec.	KCMPU411
<b>PLYMOUTH BREEZE</b>		
2.0Lts: L4 MPFI DOHC 96-00	Collarín Mec.	KCMCH76
<b>PONTIAC FIREBIRD</b>		
3.8Lts: V6 96-02	Concéntrico	KGC0944
5.7Lts: V8 96-02	Concéntrico	KGC0944
<b>FIREFLY</b>		
1.0Lts: L3 Turbo 87-89	Collarín Mec.	KCMGM03
<b>G3</b>		
1.6Lts: L4 DOHC 07-09	Collarín Mec.	KCMGM06
<b>GRAND AM</b>		
2.0Lts: L4 MPFI DOHC 02-04	Concéntrico	KGC1038
2.2Lts: Ecotec L4 MPFI DOHC 02- 04	Concéntrico	KGC1038
2.4Lts: L4 MPFI DOHC 99-01	Concéntrico	KGC1038

95-98	Concéntrico	KGC1090
-------	-------------	---------

**J2000**

2.2Lts: L4 DOHC 00-01, L4 MPFI DOHC 03-05	Concéntrico	KGC1038
---	-------------	---------

2.2Lts: L4 MPFI DOHC 95-99	Concéntrico	KGC1080
-------------------------------	-------------	---------

2.3Lts: L4 95	Concéntrico	KGC1080
---------------	-------------	---------

2.4Lts: L4 00-02	Concéntrico	KGC1038
------------------	-------------	---------

**MONTANA**

1.8Lts: V8 03-15	Concéntrico	KGC1220
------------------	-------------	---------

**SUNFIRE**

2.2Lts: L4 DOHC 00-05	Concéntrico	KGC1038
--------------------------	-------------	---------

2.2Lts: L4 MPFI DOHC 95-99	Concéntrico	KGC1080
-------------------------------	-------------	---------

2.4Lts: L4 DOHC 00-05	Concéntrico	KGC1038
--------------------------	-------------	---------

95-98	Concéntrico	KGC1090
-------	-------------	---------

**VIBE**

1.8Lts: 09-10	Cil. Maestro	KTM0K012
---------------	--------------	----------

**RENAULT**
**CLIO**

1.6Lts: K4M L4 5Vel. 16Valv. DOHC 02-10	Collarín Mec.	KCMNS02
---	---------------	---------

2.0Lts: L4 DOHC SPORT	Collarín Mec.	KCMNS02
-----------------------	---------------	---------

**DUSTER**

2.0Lts: 135 L4 16Valv. 13-16	Concéntrico	KNC4544
---------------------------------	-------------	---------

**FLUENCE**



Modelo	Aplicación	# Seire
2.0Lts: 140 L4 16Valv. 11-16	Concéntrico	<b>KNC4544</b>
<b>KANGOO</b>		
1.5Lts: L4 SOHC 09-10	Collarín Mec.	<b>KCMNS02</b>
1.6Lts: L4 5Val. DOHC 02-15	Collarín Mec.	<b>KCMNS02</b>
<b>LOGAN</b>		
1.6Lts: L4 DOHC 15-19	origen Brasil Collarín Mec.	<b>KCMNS02</b>
1.6Lts: L4 DOHC 15-19	origen Colombia Concéntrico	<b>KNC1121</b>
<b>MEGANE</b>		
2.0Lts: L4 04-09, II L4 Turbo 07-09	Concéntrico	<b>KRC1211</b>
2.0Lts: L4 02-08	Cil. Maestro	<b>KRM2281</b>
2.0Lts: L4 03-09	Concéntrico	<b>KRC1211</b>
2.0Lts: L4 DOHC 01-04	Collarín Mec.	<b>KCMNS02</b>
<b>SANDERO</b>		
1.6Lts: L4 5Val. DOHC 10-20	Collarín Mec.	<b>KCMNS02</b>
1.6Lts: L4 DOHC 15-20	origen Colombia Concéntrico	<b>KNC1121</b>
<b>SCALA</b>		
1.6Lts: L4 DOHC 11-13	Collarín Mec.	<b>KCMNS01</b>
<b>SCENIC</b>		
2.0Lts: L4 DOHC 01-04	Collarín Mec.	<b>KCMNS02</b>
<b>SCENIC II</b>		
2.0Lts: L4 06-09	Concéntrico	<b>KRC1211</b>

**STEPWAY**

1.6Lts: L4 5Val.  
DOHC 10-15

Collarín Mec. **KCMNS02**

**TRAFIC**

1.9Lts: Diesel 08-  
14

Cil. Maestro **KRM2238**

**SATURN**
**VUE**

2.2Lts: 2198 L4  
02-07

Concéntrico **KGC1038**

**SCION**
**Tc**

2.5Lts: 11-13

Cil. Maestro **KTM0K012**

**SEAT**
**ALTEA**

2.0Lts: L4 FSI  
DOHC 05-06

Cil. Maestro **KWM0388AB**

**CORDOBA**

1.6Lts: 05-09

Cil. Maestro **KWM06Q0**

1.6Lts: 100 L4  
5Val. SOHC 04-09

Collarín Mec. **KCMVW03**

1.6Lts: L4 8Valv.  
01-02

Collarín Mec. **KCMVW00**

2.0Lts: 03-09

Cil. Maestro **KWM06Q0**

2.0Lts: L4 8Valv.  
SOHC 03-09

Cil. Esclavo **KWE0261A**

2.0Lts: L4 8Valv.  
SOHC 03-10

Collarín Mec. **KCMVW06**

2.0Lts: L4 8Valv.  
SOHC 03-10

Collarín Mec. **KCMVW06-H**

**IBIZA**



Modelo	Aplicación		# Seire
1.2Lts: L4 Turbo DOHC 13-17		Cil. Esclavo	KWE0261A
1.6Lts: 04-09		Cil. Maestro	KWM06Q0
1.6Lts: 100 L4 SOHC 04-09		Collarín Mec.	KCMVW03
1.6Lts: L4 8Valv. SOHC 01-02		Collarín Mec.	KCMVW00
1.8Lts: 07-08		Cil. Maestro	KWM06Q0
2.0Lts: 03-15		Cil. Maestro	KWM06Q0
2.0Lts: L4 SOHC 03-15		Collarín Mec.	KCMVW06
2.0Lts: L4 SOHC 03-15		Collarín Mec.	KCMVW06-H
2.0Lts: L4 SOHC 03-15		Cil. Esclavo	KWE0261A
<b>LEON</b>			
1.4Lts: L4 TSI DOHC 08-19		Cil. Maestro	KWM0388AB
1.8Lts: 1781 L4 20Valv. DOHC 01-06, 1781 L4 20Valv. Turbo DOHC 01-06		Cil. Maestro	KWM0721
1.8Lts: L4 01-06		Collarín Mec.	KCMVW05
1.8Lts: L4 20Valv. DOHC 01-06		Cil. Esclavo	KWE0261D
1.8Lts: L4 TSI DOHC 08-13, L4 Turbo DOHC 01-06		Cil. Maestro	KWM0388AB
2.0Lts: L4 DOHC 07-13	FR	Cil. Maestro	KWM0388AB
2.0Lts: L4 FSI DOHC 06-09		Cil. Maestro	KWM0388AB

2.0Lts: L4 TFSI DOHC 06-12	CUPRA	Cil. Maestro	KWM0388AB
----------------------------	-------	--------------	-----------

## TOLEDO

1.2Lts: L4 TSI DOHC 15-17		Cil. Esclavo	KWE0261A
1.8Lts: 04-05		Cil. Maestro	KWM06Q0
1.8Lts: 1781 L4 20Valv. DOHC 01-05, 1781 L4 20Valv. Turbo DOHC 01-05		Cil. Maestro	KWM0721
1.8Lts: L4 01-07		Collarín Mec.	KCMVW05
1.8Lts: L4 20Valv. DOHC 01-04		Cil. Esclavo	KWE0261D
L4 20Valv. Turbo DOHC 01-04		Cil. Esclavo	KWE0261D

## SUZUKI

### CIAZ

1.5Lts: L4 15-22		Concéntrico	KSC0240
------------------	--	-------------	---------

### SIDEKICK

1.6Lts: L4 Gasolina 96-98		Cil. Esclavo	KNE3509
---------------------------	--	--------------	---------

## SWIFT

1.3Lts: 62 L4 03-15		Collarín Mec.	KCMGM03
1.4Lts: L4 DOHC 12-17		Collarín Mec.	KCMSUK01
1.4Lts: L4 DOHC 12-17		Cil. Esclavo	KSE8L00
1.4Lts: L4 DOHC 12-17		Cil. Maestro	KSM2607
1.5Lts: L4 07-11		Collarín Mec.	KCMGM03





Modelo	Aplicación	# Seire
1.5Lts: L4 DOHC 07-11	Cil. Esclavo	KSE3315
1.5Lts: L4 DOHC 07-11	Cil. Maestro	KSM2495
1.6Lts: L4 DOHC 04-08	Collarín Mec.	KCMGM06
<b>SX4</b>		
2.0Lts: 1997 L4 Gasolina 08-12	Cil. Maestro	KSM079J
<b>TOYOTA</b>		
<b>4RUNNER</b>		
2.2Lts: 22R L4 80-85, 22RE L4 80-85	Collarín Mec.	KCMTY01
2.4Lts: L4 Gasolina 84-95	Cil. Esclavo	KTE3512
2.4Lts: L4 Gasolina 89-95	Cil. Maestro	KTM2552
2.4Lts: L4 Turbo Diesel 80-86, 22R L4 85-92, 22RE L4 85-92	Collarín Mec.	KCMTY01
2.7Lts: 22R L4 84-86, 22REC L4 Carburador 80-88	Collarín Mec.	KCMTY01
2.7Lts: L4 DOHC 96-00	Collarín Mec.	KCMTY03
3.0Lts: V6 88-95	Collarín Mec.	KCMTY01
3.0Lts: V6 Gasolina 88-95	Cil. Esclavo	KTE3512
<b>AVANZA</b>		
1.5Lts: L4 DOHC 07-20	Cil. Esclavo	KTEB001
1.5Lts: L4 DOHC 07-20	Cil. Maestro	KTM7401

**CAMRY**

2.4Lts: 09	Cil. Maestro	KTM0K012
------------	--------------	----------

**CELICA**

2.2Lts: L4 OHV 74-80	Collarín Mec.	KCMTY01
-------------------------	---------------	---------

2.4Lts: L4 75-77	Collarín Mec.	KCMTY01
------------------	---------------	---------

2.4Lts: L4 L4 81, L6 SOHC 81-85	GT	Collarín Mec.	KCMTY01
---------------------------------	----	---------------	---------

2.4Lts: L4 L4 81, L6 SOHC 81-85	ST	Collarín Mec.	KCMTY01
---------------------------------	----	---------------	---------

**COROLLA**

1.8Lts: 10-15	Cil. Maestro	KTM0K012
---------------	--------------	----------

**CORONA**

1.6Lts: L4 SOHC 71-78	Collarín Mec.	KCMTY01
--------------------------	---------------	---------

2.0Lts: L4 71-78	Collarín Mec.	KCMTY01
------------------	---------------	---------

2.2Lts: L4 74-82	Collarín Mec.	KCMTY01
------------------	---------------	---------

2.2Lts: L4 Gasolina 78	Cil. Esclavo	KTE3512
---------------------------	--------------	---------

2.4Lts: L4 80-82	Collarín Mec.	KCMTY01
------------------	---------------	---------

**CRESSIDA**

1.8Lts: L4 82-90	Collarín Mec.	KCMTY01
------------------	---------------	---------

2.0Lts: L4 82-90	Collarín Mec.	KCMTY01
------------------	---------------	---------

2.4Lts: L4 82-90, L4 Turbo 84-92	Collarín Mec.	KCMTY01
----------------------------------	---------------	---------

**CROWN**

2.4Lts: L4 Turbo 82-98	Collarín Mec.	KCMTY01
---------------------------	---------------	---------

**HIACE**

2.7Lts: 2694 L4 Gasolina 06-09	Cil. Maestro	KTM26200
-----------------------------------	--------------	----------



Modelo	Aplicación	# Seire			
2.7Lts: 3RZ-FE L4 5Val. 16Valv. DOHC 06-18	Collarín Mec.	KCMTY03	2.4Lts: 2366 L4 Gasolina 89-95	Cil. Maestro	KTM2552
2.7Lts: L4 16Valv. DOHC 06-18	Cil. Esclavo	KTE26120	2.4Lts: L4 Diesel 85-86, 22R L4 80- 88, 22RE L4 80-88	Collarín Mec.	KCMTY01
2.7Lts: L4 16Valv. DOHC 06-18	Collarín Mec.	KCMTY01	2.4Lts: L4 Gasolina 81-95	Cil. Esclavo	KTE3512
2.8Lts: L4 Diesel 19-21	Collarín Mec.	KCMTY05	<b>PREVIA</b>		
2700 L4 Gasolina 10-17	Cil. Maestro	KTM26200	2.0Lts: L4 84-86	VAN	Collarín Mec. KCMTY01
<b>HILUX</b>			2.2Lts: L4 84-86	VAN	Collarín Mec. KCMTY01
2.0Lts: L4 83-95	Collarín Mec.	KCMTY01	<b>SUPRA</b>		
2.4Lts: L4 83-95	Collarín Mec.	KCMTY01	2.6Lts: L4 SOHC L4 79, L6 79-80	Collarín Mec.	KCMTY01
2.7Lts: 05-16	Cil. Maestro	KTM0K012	2.8Lts: L6 83-85, L6 SOHC 81-82	Collarín Mec.	KCMTY01
2.7Lts: 3RZ-FE L4 DOHC 06-07	Collarín Mec.	KCMTY03	<b>T100</b>		
2.7Lts: 4 17-19	Collarín Mec.	KCMTY06	2.7Lts: 3RZ-FE L4 94-04	Collarín Mec.	KCMTY03
2.7Lts: L4 DOHC 04-15	Cil. Esclavo	KTEK051	2.7Lts: L4 94	Cil. Esclavo	KTE3512
2.8Lts: L4 Diesel 16-21	Collarín Mec.	KCMTY05	3.0Lts: V6 93-94	Collarín Mec.	KCMTY01
<b>MATRIX</b>			3.0Lts: V6 Gasolina 93-94	Cil. Esclavo	KTE3512
2.4Lts: 09-13	Cil. Maestro	KTM0K012	<b>TACOMA</b>		
<b>PICK UP</b>			2.4Lts: 3RZ-FE L4 01-03	Collarín Mec.	KCMTY03
2.0Lts: L4 75, 18R L4 74-75	Collarín Mec.	KCMTY01	2.7Lts: 3RZ-FE L4 94-04	Collarín Mec.	KCMTY03
2.2Lts: L4 Diesel 81-83, 20R L4 74- 80	Collarín Mec.	KCMTY01	4.0Lts: L6 05-13	Cil. Maestro	KTM4010
2.2Lts: L4 Gasolina 78-80	Cil. Esclavo	KTE3512	<b>VAN</b>		
			2.0Lts: L4 84-88	Collarín Mec.	KCMTY01
			2.2Lts: L4 84-88	Collarín Mec.	KCMTY01



Modelo	Aplicación	# Seire
2.2Lts: L4 Gasolina 89	Cil. Esclavo	KTE3512
<b>VOLKSWAGEN</b>		
<b>ATLANTIC</b>		
1.6Lts: L4 4Vel. 77-83	Collarín Mec.	KCMVW00
1.7Lts: L4 4Vel. 77-83	Collarín Mec.	KCMVW00
1.8Lts: L4 5Vel. 84-87	Collarín Mec.	KCMVW00
<b>BEETLE</b>		
1.8Lts: L4 14-16	Cil. Maestro	KWM0388AB
1.8Lts: L4 DOHC 00-05	Cil. Maestro	KWM0721
1.8Lts: L4 Turbo DOHC 00-05	Cil. Esclavo	KWE0261D
2.0Lts: L4 SOHC 00-05	CABRIOLE T Collarín Mec.	KCMVW05
2.0Lts: L4 SOHC 00-05	Cil. Esclavo	KWE0261D
2.0Lts: L4 SOHC 00-05	GLS Collarín Mec.	KCMVW05
2.0Lts: L4 SOHC 98-11	GLS Cil. Maestro	KWM0721
2.0Lts: L4 SOHC 98-11	CABRIOLE T Cil. Maestro	KWM0721
2.0Lts: L4 TSI 12- 15	Cil. Maestro	KWM0388AB
2.5Lts: L5 DOHC 12-18	Cil. Maestro	KWM0388AB
<b>BORA</b>		
1.9Lts: L4 TDI SOHC 08-10	Cil. Maestro	KWM0388AB

2.0Lts: L4 Turbo 06-10	GLI Cil. Maestro	KWM0388AB
2.5Lts: L5 DOHC 06-10	Cil. Maestro	KWM0388AB
<b>BRASILIA</b>		
1.6Lts: B4 OHV 74-82	Collarín Mec.	KCMVW04
<b>CABRIO</b>		
1.8Lts: L4 01-02	Cil. Maestro	KWM0721
2.0Lts: L4 00-02	Cil. Esclavo	KWE0261D
2.0Lts: L4 99-02	Cil. Maestro	KWM0721
<b>CABRIOLET</b>		
1.8Lts: L4 84-92	Collarín Mec.	KCMVW00
<b>CADDY</b>		
1.2Lts: L4 14-17	Cil. Maestro	KWM0388AB
<b>CARIBE</b>		
1.6Lts: L4 77-81, L4 4Vel. 77-81	Collarín Mec.	KCMVW00
1.8Lts: L4 5Vel. 84-87	Collarín Mec.	KCMVW00
<b>CC</b>		
2.0Lts: L4 14-17	Cil. Maestro	KWM0388AB
<b>COMBI</b>		
1.6Lts: B4 OHV 74-87	Collarín Mec.	KCMVW04
1.8Lts: B4 SOHC 88-01	Collarín Mec.	KCMVW04
<b>CORSAR</b>		
1.8Lts: L4 5Vel. OHC 83-98	Collarín Mec.	KCMVW04
<b>CRAFTER</b>		



Modelo	Aplicación		# Seire
2.1Lts: 08-14	CARGO VAN T4	Cil. Maestro	KWM0401B
2.1Lts: 09-13	CARGO VAN T5	Cil. Maestro	KWM0401B
2.5Lts: 08-12	CARGO VAN T4	Cil. Maestro	KWM0401B
2.5Lts: 09-14	CARGO VAN T5	Cil. Maestro	KWM0401B

### CROSSFOX

1.6Lts: 06-15		Cil. Maestro	KWM06Q0
1.6Lts: L4 06-15		Collarín Mec.	KCMVW03
1.6Lts: L4 06-15		Cil. Esclavo	KWE0261A

### DERBY

1.8Lts: L4 05-09		Cil. Maestro	KWM0721
1.8Lts: L4 5Vel. 94-09		Collarín Mec.	KCMVW00
1.8Lts: L4 99-09		Cil. Esclavo	KWE0261D
2.0Lts: L4 DOHC 01-05		Collarín Mec.	KCMVW00
2.0Lts: L4 SOHC 01-07		Collarín Mec.	KCMVW05

### EOS

2.0Lts: L4 10		Cil. Maestro	KWM0388AB
---------------	--	--------------	-----------

### EUROVAN

1.9Lts: L4 OHV Diesel 05-09		Cil. Esclavo	KWE0261D
1.9Lts: TDI 05-12	T4	Cil. Maestro	KWM0401B
2.0Lts: TDI 05-12	T4	Cil. Maestro	KWM0401B
2.5Lts: L5 DOHC 00-04		Cil. Esclavo	KWE0261D
2.5Lts: TDI 05-12	T4	Cil. Maestro	KWM0401B
3.2Lts: 05-12	T4	Cil. Maestro	KWM0401B

### FOX

1.8Lts: L4 5Vel. OHC 87-93		Collarín Mec.	KCMVW04
----------------------------	--	---------------	---------

### GOL

1.6Lts: L4 09-20		Collarín Mec.	KCMVW03
1.6Lts: L4 SOHC 09-20		Cil. Esclavo	KWE0261A

### GOLF

1.8Lts: L4 01-02	GLS	Cil. Maestro	KWM0721
1.8Lts: L4 15-19		Cil. Maestro	KWM2478
1.8Lts: L4 4Vel. 88-92, L4 5Vel. 88-92	A2	Collarín Mec.	KCMVW00
1.8Lts: L4 92-99	A3	Collarín Mec.	KCMVW00
1.8Lts: L4 Turbo 01-02	A4 GTI	Cil. Esclavo	KWE0261D
1.8Lts: L4 Turbo 01-02	A4 GTI	Cil. Maestro	KWM0721
2.0Lts: L4 00-07	A4 MI	Cil. Esclavo	KWE0261D
2.0Lts: L4 01-04	A4	Collarín Mec.	KCMVW00
2.0Lts: L4 15-19		Cil. Maestro	KWM2478
2.0Lts: L4 5Vel. SOHC 00-13	A4 MI	Collarín Mec.	KCMVW05
2.0Lts: L4 94-02	A3	Collarín Mec.	KCMVW00
2.0Lts: L4 99-07	A4	Collarín Mec.	KCMVW05
2.0Lts: L4 SOHC 00-03	A4 GTI	Cil. Esclavo	KWE0261D
2.0Lts: L4 SOHC 00-07	GL	Cil. Esclavo	KWE0261D
2.0Lts: L4 SOHC 94-98	GLS	Collarín Mec.	KCMVW00



Modelo	Aplicación		# Seire				
2.0Lts: L4 SOHC 95-97	GL	Collarín Mec.	KCMVW00	2.0Lts: L4 99-15	A4	Collarín Mec.	KCMVW05
2.0Lts: L4 SOHC 96-99	CL	Collarín Mec.	KCMVW00	2.0Lts: L4 DOHC 13-18, L4 Turbo DOHC 12-17	A6	Cil. Maestro	KWM0388AB
3.2Lts: V6 DOHC 04-06	R32	Cil. Maestro	KWM0721	2.0Lts: L4 DOHC 96-99	GLX	Cil. Maestro	KWM0721
<b>GTI</b>				2.0Lts: L4 DOHC 96-99	EUROPA	Cil. Maestro	KWM0721
2.0Lts: L4 SOHC 00-03		Cil. Maestro	KWM0721	2.0Lts: L4 SOHC 11-15	TEAM	Cil. Esclavo	KWE0261D
2.0Lts: L4 Turbo 07-13		Cil. Maestro	KWM0388AB	2.0Lts: L4 SOHC 11-15	CLASICO	Collarín Mec.	KCMVW05
<b>JETTA</b>				2.0Lts: L4 SOHC 11-15	CLASICO	Cil. Esclavo	KWE0261D
1.8Lts: L4 5Vel. 86-92	A2	Collarín Mec.	KCMVW00	2.0Lts: L4 SOHC 11-15	CL	Cil. Esclavo	KWE0261D
1.8Lts: L4 92-99	A3	Collarín Mec.	KCMVW00	2.0Lts: L4 SOHC 11-15	GL	Cil. Esclavo	KWE0261D
1.8Lts: L4 DOHC 00-05	SPORTLINE	Cil. Esclavo	KWE0261D	2.0Lts: L4 SOHC 96-99	GLX	Cil. Esclavo	KWE0261D
1.8Lts: L4 SOHC 97-99	GL	Collarín Mec.	KCMVW00	2.0Lts: L4 SOHC 96-99	A3 GL	Cil. Esclavo	KWE0261D
1.8Lts: L4 Turbo 02-05		Cil. Maestro	KWM0721	2.0Lts: L4 SOHC 96-99	EUROPA	Cil. Esclavo	KWE0261D
1.8Lts: L4 Turbo 10-12	GLI	Cil. Maestro	KWM0721	2.0Lts: L4 SOHC 99-10	A4	Cil. Esclavo	KWE0261D
1.8Lts: L4 Turbo DOHC 00-05	A4 GLS	Cil. Esclavo	KWE0261D	2.0Lts: L4 SOHC 99-15	A4 CLASICO	Cil. Maestro	KWM0721
1.9Lts: L4 Diesel 06-10		Cil. Maestro	KWM0388AB	2.5Lts: L5 DOHC 11-18	A6	Cil. Maestro	KWM0388AB
1.9Lts: L4 TDI SOHC 06-13		Cil. Maestro	KWM0721	2.8Lts: 2771 V6 Gasolina 99-02		Cil. Maestro	KWM0721
2.0Lts: L3 DOHC 96-99	GL	Cil. Maestro	KWM0721	L4 DOHC 96-99	A3	Cil. Maestro	KWM0721
2.0Lts: L4 05-10		Cil. Maestro	KWM0388AB	<b>LUPO</b>			
2.0Lts: L4 96-99	A3	Collarín Mec.	KCMVW00				

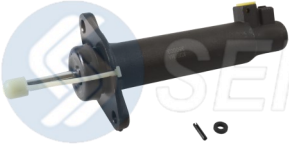


Modelo	Aplicación		# Seire
1.6Lts: 05-09		Cil. Maestro	<b>KWM06Q0</b>
1.6Lts: L4 5Vel. 04-10		Collarín Mec.	<b>KCMVW03</b>
1.6Lts: L4 DOHC 05-09		Cil. Esclavo	<b>KWE0261A</b>
<b>MULTIVAN</b>			
2.0Lts: 1968 L4 Diesel 13		Cil. Maestro	<b>KWM0401B</b>
<b>NEW BEETLE</b>			
2.0Lts: L4 98-07		Collarín Mec.	<b>KCMVW05</b>
<b>PASSAT</b>			
1.8Lts: L4 14-15		Cil. Maestro	<b>KWM0388AB</b>
2.0Lts: L4 Diesel 12-15		Cil. Maestro	<b>KWM0388AB</b>
2.5Lts: L5 13-15		Cil. Maestro	<b>KWM0388AB</b>
<b>POINTER</b>			
1.8Lts: L4 5Vel. SOHC 97-10	CITY	Collarín Mec.	<b>KCMVW04</b>
1.8Lts: L4 5Vel. SOHC 99-09	PICK UP	Collarín Mec.	<b>KCMVW04</b>
1.8Lts: L4 SOHC 98-05	STATION WAGON	Collarín Mec.	<b>KCMVW04</b>
2.0Lts: L4 5Vel. SOHC 99-06	GTI	Collarín Mec.	<b>KCMVW04</b>
<b>POLO</b>			
1.2Lts: L4 Turbo SOHC 13-14		Cil. Esclavo	<b>KWE0261A</b>
1.6Lts: 06-07		Cil. Maestro	<b>KWM06Q0</b>
1.6Lts: L4 03-07		Collarín Mec.	<b>KCMVW03</b>
1.6Lts: L4 DOHC 15-20		Cil. Esclavo	<b>KWE0261A</b>
2.0Lts: 03-07		Cil. Maestro	<b>KWM06Q0</b>

2.0Lts: L4 8Valv. OHC 03-07		Cil. Esclavo	<b>KWE0261A</b>
2.0Lts: L4 OHC 03-07		Collarín Mec.	<b>KCMVW06</b>
2.0Lts: L4 OHC 03-07		Collarín Mec.	<b>KCMVW06-H</b>
<b>RABBIT</b>			
1.8Lts: L4 16Valv. 82-90		Collarín Mec.	<b>KCMVW00</b>
<b>SAFARI</b>			
1.6Lts: B4 OHV 74-04		Collarín Mec.	<b>KCMVW04</b>
<b>SAVEIRO</b>			
1.6Lts: L4 5Vel. 10-18		Collarín Mec.	<b>KCMVW03</b>
1.6Lts: L4 SOHC 10-17		Cil. Esclavo	<b>KWE0261A</b>
<b>SCIROCCO</b>			
1.8Lts: L4 16Valv. 82-90		Collarín Mec.	<b>KCMVW00</b>
<b>SEDAN</b>			
1.6Lts: B4 OHV 74-04		Collarín Mec.	<b>KCMVW04</b>
<b>SPORTVAN</b>			
1.6Lts: 07-10		Cil. Maestro	<b>KWM06Q0</b>
1.6Lts: L4 07-11		Collarín Mec.	<b>KCMVW03</b>
1.6Lts: L4 OHC 07-10		Cil. Esclavo	<b>KWE0261A</b>
<b>TIGUAN</b>			
2.0Lts: L4 09-17		Cil. Maestro	<b>KWM0388AB</b>
<b>TRANSPORTER</b>			



Modelo	Aplicación		# Seire
2.0Lts: 1968 L4 TD Diesel 14-18		Cil. Maestro	KWM0401B
2.1Lts: TDI Diesel 03-14	T4	Cil. Maestro	KWM0401B
2.6Lts: TDI Diesel 03-14	T4	Cil. Maestro	KWM0401B
<b>UP</b>			
1.0Lts: L3 16-18		Cil. Maestro	KWM2478
1.6Lts: L4 14-22		Cil. Esclavo	KWE0261A
<b>VAN</b>			
1.8Lts: L4 SOHC 03-09		Collarín Mec.	KCMVW05
<b>VARIANT</b>			
1.8Lts: L4 5Vel. OHC 83-98		Collarín Mec.	KCMVW04
<b>VENTO</b>			
1.6Lts: L4 DOHC Gasolina 14-20		Cil. Esclavo	KWE0261A

**KCE0877**

**Cil. Esclavo**
**CHRYSLER**

 D250  
 D350  
 DAKOTA  
 MICROBUS  
 RAM CHARGER

SCE-877

**KCE0881**

**Cil. Esclavo**
**CHRYSLER**

 B150  
 B250  
 D150  
 D250  
 D350  
 MICROBUS  
 RAM 1500  
 RAM 2500

SCE-881

**KFE0412**

**Cil. Esclavo**
**FORD**

 RANGER  
 TRANSIT

512 0359 10 CCE3050 SFE-412

**KFE0476**

**Cil. Esclavo**
**FORD**

 BRONCO II  
 F250  
 F350  
 F450

SFE-476

**KFE0485**

**Cil. Esclavo**
**FORD**

 BRONCO  
 E100  
 E250  
 E350  
 F100  
 F150  
 F250  
 F350

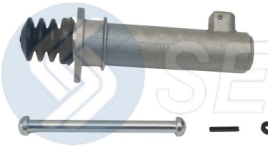
SFE-485

**KFE0530**

**Cil. Esclavo**
**FORD**

 F250  
 F350  
 F450  
 F550

SFE-530

**KFE0891**

**Cil. Esclavo**
**FORD**

 BRONCO  
 F150  
 F200  
 F250  
 F350  
 P350

SFE-891

**KGE0425**

**Cil. Esclavo**
**GM**

 BEAT  
 SPARK

SGE-425



**KGE0870**



**Cil. Esclavo**

**BUICK  
GM  
OLDSMOBILE**  
BERETTA  
CAVALIER  
CELEBRITY  
CUTLASS  
SKYHAWK  
SKYLARK  
SUNBIRD PONTIAC

SGE-870

**KGE0871**



**Cil. Esclavo**

**GM  
OLDSMOBILE**  
CAVALIER  
CELEBRITY  
CUTLASS  
LUMINA  
SUNBIRD PONTIAC  
Z24

SGE-871

**KGE0872**



**Cil. Esclavo**

**GM**  
C10  
C15  
C1500  
C20  
C2500  
C35  
C3500  
CHEYENNE

SGE-872

**KGE0873**

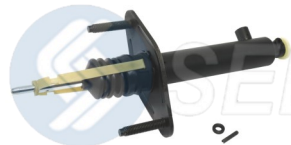


**Cil. Esclavo**

**GM**  
BLAZER  
JIMMY  
S10  
SONOMA

SGE-873

**KGE0874**



**Cil. Esclavo**

**GM**  
BLAZER  
JIMMY  
S10  
SONOMA

SGE-874

**KGE4709**



**Cil. Esclavo**

**GM**  
AVEO

**KGE4993**



**Cil. Esclavo**

**GM**  
LUV

**KGE8812**

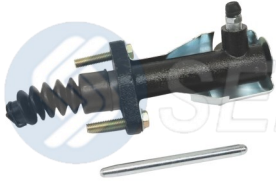


**Cil. Esclavo**

**GM**  
S10  
S10 BLAZER  
S15

CCE8812

**KGE8813**



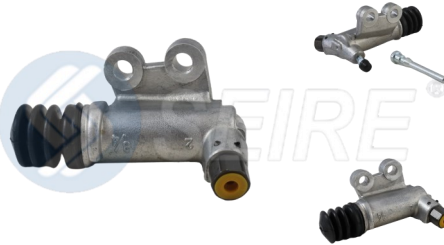
**Cil. Esclavo**

**GM  
OLDSMOBILE**

BRAVADA  
S10  
S10 BLAZER  
S15  
SONOMA

CCE8813

**KHE1023**



**Cil. Esclavo**

**HONDA**

CIVIC  
CR-Z  
FIT

SHE-61023

**KME0832**



**Cil. Esclavo**

**MITSUBISHI**

L200

512 0408 10

**KME1578**



**Cil. Esclavo**

**MITSUBISHI**

L200

512 0408 10

**KME1920**



**Cil. Esclavo**

**MAZDA**

3  
CX-3  
CX-5

**KME3081**



**Cil. Esclavo**

**MAZDA**

2

CCE3081

**KME3551**



**Cil. Esclavo**

**MAZDA**

B2000  
B2200

CCE3551 SME-61015

**KNE3052**



**Cil. Esclavo**

**NISSAN**

NP300  
NV350  
URVAN

CCE3052

**KNE3507**

PRÓXIMAMENTE

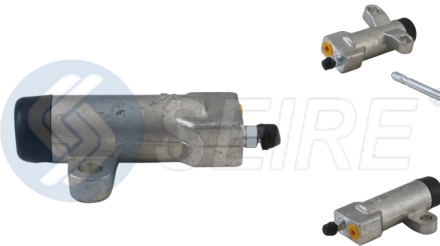
**Cil. Esclavo**

**NISSAN**

240  
280  
MAXIMA  
VAN

CCE3507

**KNE3509**



**Cil. Esclavo**

**NISSAN  
SUZUKI**

620  
720  
SIDEKICK

CCE3509

**KNE3529**



**Cil. Esclavo**

**NISSAN**

D21  
PICK UP

CCE3529 SNE-61006

**KNE3541**



**Cil. Esclavo**

**NISSAN**

200SX  
D21  
NP300  
PATHFINDER  
PICK UP

CCE3541 SNE-61009

**KSE3315**



**Cil. Esclavo**

**SUZUKI**

SWIFT

CCE3315

**KSE8L00**



**Cil. Esclavo**

**SUZUKI**

SWIFT

**KTE26120**



**Cil. Esclavo**

**TOYOTA**

HIACE

512 0393 10

**KTE3512**



**Cil. Esclavo**

**TOYOTA**

4RUNNER  
CORONA  
PICK UP  
T100  
VAN

CCE3512 STE-61034

**KTEB001**
**Cil. Esclavo**
**TOYOTA**

AVANZA

PRÓXIMAMENTE

512 0387 10

**KTEK051**
**Cil. Esclavo**
**TOYOTA**

HILUX



512 0390 10

**KWE0261A**
**Cil. Esclavo**
**AUDI  
SEAT  
VW**

A1

A3

CORDOBA

CROSSFOX

GOL

IBIZA

LUPO

POLO



512 0340 10 SWE-261A

**KWE0261D**
**Cil. Esclavo**
**SEAT**
**VW**

BEETLE

CABRIO

DERBY

EUROVAN

GOLF

JETTA

LEON

TOLEDO



512 0151 10 SWE-261D

**KCM0103**
**Cil. Maestro**
**CHRYSLER**

RAM 1500

RAM 2500

RAM 3500

RAM 4000

RAM FULL SIZE



SCM-103

**KCM0138**
**Cil. Maestro**
**CHRYSLER**

RAM 1500

RAM 2500

RAM 3500

RAM 4000



SCM-138

**KCM2399**
**Cil. Maestro**
**CHRYSLER  
KIA**

ATTITUDE

RIO



CCM2399

**KFM0005**
**Cil. Maestro**
**FORD**

EXPLORER

F100

RANGER



SFM-005

**KFM0019**



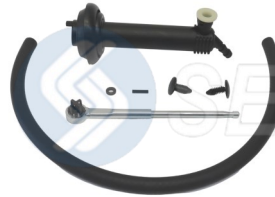
**Cil. Maestro**

**FORD**

F150  
F250  
F450

SFM-019

**KFM0108**



**Cil. Maestro**

**FORD**

F250  
F350  
F450  
F550

SFM-108

**KFM0124**



**Cil. Maestro**

**FORD**

RANGER

SFM-124

**KFM0270**



**Cil. Maestro**

**FORD**

AEROSTAR  
BRONCO  
RANGER

SFM-270

**KFM0434**



**Cil. Maestro**

**FORD**

RANGER

511 0336 10 CCM2487 SFM-434

**KFM0443**



**Cil. Maestro**

**FORD**

ECOSPORT  
FIESTA

511 0612 10 SFM-443

**KFM0578**



**Cil. Maestro**

**FORD**

EXPLORER  
RANGER

SFM-578

**KFM0579**



**Cil. Maestro**

**FORD**

RANGER

SFM-579

**KFM0886**



**Cil. Maestro**

**FORD**

BRONCO  
F150  
F250  
F350

SFM-886

**KFM0887**



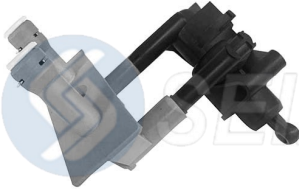
**Cil. Maestro**

**FORD**

BRONCO  
F150  
F200  
F250  
F350  
P350  
VANETTE

SFM-887

**KFM1133**



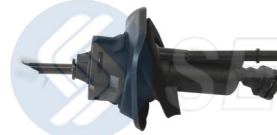
**Cil. Maestro**

**FORD**

FOCUS

SFM-1133

**KFM2185**



**Cil. Maestro**

**FORD  
MAZDA**

3  
5  
FOCUS

CCM2185

**KFM2257**



**Cil. Maestro**

**FORD**

TRANSIT

CCM2257

**KFM2S61**



**Cil. Maestro**

**FORD**

ECOSPORT  
FIESTA

CCM2171 SFM-2S61

**KFM4927**



**Cil. Maestro**

**FORD**

RANGER

**KFME3B1**



**Cil. Maestro**

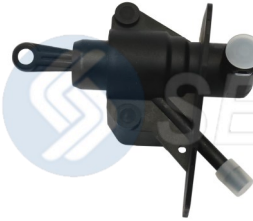
**FORD**

FIESTA  
FIGO

**KFMH1B1**

**Cil. Maestro**
**FORD**

FIGO

**KFMXS61**

**Cil. Maestro**
**FORD**

 COURIER  
FIESTA  
IKON  
KA

CCM2170 SFM-XS61

**KGM0010**

**Cil. Maestro**
**GM**

 400SS  
BLAZER  
C1500  
C2500  
C3500  
P30  
PICK UP  
SILVERADO

SGM-010

**KGM0097**

**Cil. Maestro**
**GM**

 C10  
C15  
C1500  
C35  
CHEYENNE  
HUNTER  
P30  
SILVERADO

SGM-097

**KGM0137**

**Cil. Maestro**
**GM**

 C1500  
C3500  
C4000  
SIERRA  
SILVERADO

SGM-137

**KGM0153**

**Cil. Maestro**
**GM  
ISUZU**

 BLAZER  
HOMBRE  
JIMMY  
S10  
SONOMA

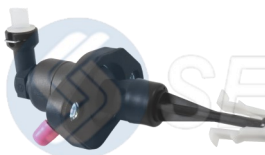
SGM-153

**KGM0539**

**Cil. Maestro**
**GM**

 BLAZER  
S10

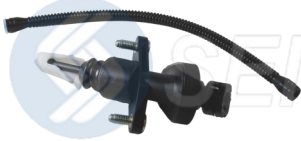
SGM-539

**KGM0623**

**Cil. Maestro**
**GM**

 BEAT  
SPARK

SGM-623

**KGM0712**



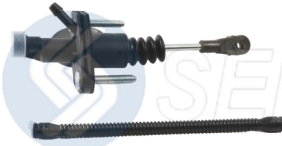
**Cil. Maestro**

**GM**

CORSA  
MERIVA  
TORNADO

SGM-712

**KGM0769**



**Cil. Maestro**

**GM**

ASTRA  
ZAFIRA

SGM-769

**KGM0800**



**Cil. Maestro**

**GM**

SONIC  
TRAX

SGM-800

**KGM0856**



**Cil. Maestro**

**GM**

C3500

SGM-856

**KGM0997**



**Cil. Maestro**

**BUICK  
GM**

CRUZE  
REGAL

511 0643 10 SGM-997

**KGM1493**

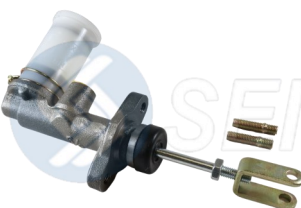


**Cil. Maestro**

**GM**

AVEO  
CAVALIER

**KGM2188**



**Cil. Maestro**

**GM  
HONDA  
ISUZU**  
AMIGO  
LUV  
PASSPORT  
PICK UP  
RODEO  
TROOPER

**KGM5304**



**Cil. Maestro**

**GM**

ONIX  
TRACKER



**KGM7741**

**Cil. Maestro**
**GM**

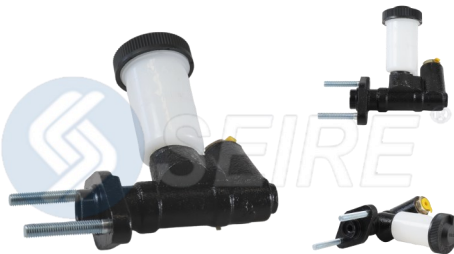
 C1500  
 C2500  
 C3500  
 K1500  
 K2500  
 K3500

CCM7741

**KGM8983**

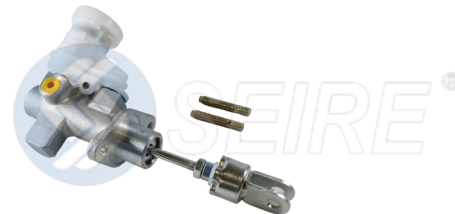
**Cil. Maestro**
**GM**

SPARK

**KMM2558**

**Cil. Maestro**
**MAZDA**

 B2000  
 B2200  
 B2600

CCM2558 SMM-11010

**KMM5036**

**Cil. Maestro**
**MITSUBISHI**

L200

511 0654 10

**KMMA015**

**Cil. Maestro**
**MITSUBISHI**

L200

511 0656 10

**KNM01HK**

**Cil. Maestro**
**NISSAN**

 MARCH  
 VERSA

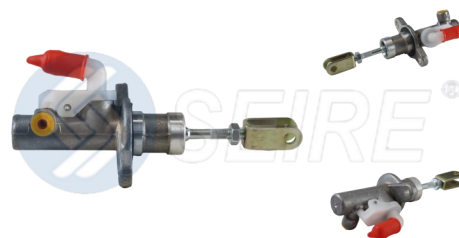
511 0756 10 SNM-1HK

**KNM0KM0**

**Cil. Maestro**
**NISSAN**

 Juke  
 SENTRA  
 TiIDA

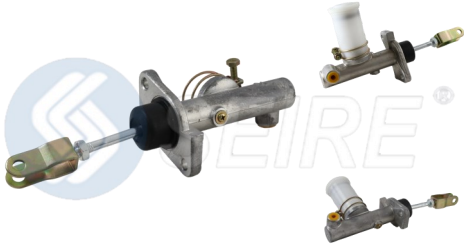
511 0755 10 SNM-KM0

**KNM2198**

**Cil. Maestro**
**NISSAN**

URVAN

CCM2198

**KNM2516**



**Cil. Maestro**

**NISSAN**

200SX  
210  
240  
280  
300  
310  
720  
810

CCM2516 SNM-11044

**KRM2238**



**Cil. Maestro**

**RENAULT**

TRAFIC

CCM2238 SRM-488

**KRM2281**



**Cil. Maestro**

**RENAULT**

MEGANE

CCM2281

**KSM079J**



**Cil. Maestro**

**SUZUKI**

SX4

SSM-79J

**KSM2495**

PRÓXIMAMENTE

**Cil. Maestro**

**SUZUKI**

SWIFT

CCM2495

**KSM2607**

PRÓXIMAMENTE

**Cil. Maestro**

**SUZUKI**

SWIFT

**KTM0K012**



**Cil. Maestro**

**PONTIAC  
SCION  
TOYOTA**  
CAMRY  
COROLLA  
HILUX  
MATRIX  
Tc  
VIBE

511 0061 10 CCM7037

**KTM2552**



**Cil. Maestro**

**TOYOTA**

4RUNNER  
PICK UP

CCM2552 STM-11050

**KTM26200**



**Cil. Maestro**

**TOYOTA**

HIACE

STM-26200

**KTM4010**

PRÓXIMAMENTE

**Cil. Maestro**

**TOYOTA**

TACOMA

**KTM7401**



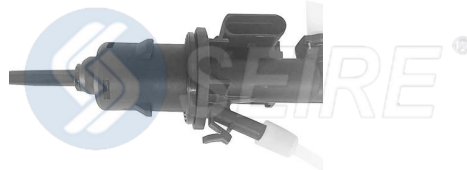
**Cil. Maestro**

**TOYOTA**

AVANZA

511 0658 10 D121146

**KWM0388AB**



**Cil. Maestro**

**AUDI  
SEAT  
VW**  
A3  
ALTEA  
BEETLE  
BORA  
CADDY  
CC  
EOS  
GTI

SWM-388AB

**KWM0401B**



**Cil. Maestro**

**VW**

CRAFTER  
EUROVAN  
MULTIVAN  
TRANSPORTER

SWM-401B

**KWM06Q0**



**Cil. Maestro**

**SEAT  
VW**  
CORDOBA  
CROSSFOX  
IBIZA  
LUPO  
POLO  
SPORTVAN  
TOLEDO

511 0339 10 CCM2388 SWM-6Q0

**KWM0721**



**Cil. Maestro**

**AUDI  
SEAT  
VW**  
BEETLE  
CABRIO  
DERBY  
GOLF  
GTI  
JETTA  
LEON  
TOLEDO

511 0150 10 CCM2111 SWM-721

**KWM2478**



**Cil. Maestro**

**AUDI  
VW**  
A3  
GOLF  
TT  
UP

**KCM0201**

**Collarín Mecánico**

**FORD**

F100



**KCM1087G**

**Collarín Mecánico**

**CHRYSLER  
DINA**

D600  
Serie 500



c/grasera

**KCM1171G**

**Collarín Mecánico**

**DINA**

Serie 631  
Serie 861



c/grasera

**KCM1171M**

**Collarín Mecánico**

**CHRYSLER  
DINA**

D600  
Delfin  
Serie 500  
Serie 600  
Serie 631  
Serie 661  
Serie 700



c/muesca

**KCM1430**

**Collarín Mecánico**

**GM**

CELEBRITY



**KCM4007**

**Collarín Mecánico**

**CHRYSLER**

LeBARON



**KCM4018**

**Collarín Mecánico**

**GM**

C10  
C30  
C35  
IMPALA  
MALIBU  
NOVA  
P30



**KCM4122**

**Collarín Mecánico**

**HONDA**

CIVIC



**KCM4175**

**Collarín Mecánico**

**FORD**

F150  
F250  
F350



**KCMCH01**

**Collarín Mecánico**

**CHRYSLER  
HYUNDAI**

ATOS  
GRAND i10  
i10



500 1090 10

**KCMCH02**

**Collarín Mecánico**

**CHRYSLER  
JEEP**

CHEROKEE  
CLUB CAB  
D100  
D150  
D250  
D350  
DAKOTA  
LIBERTY



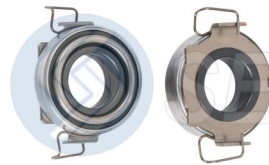
500 0550 10

**KCMCH106**

**Collarín Mecánico**

**CHRYSLER  
MITSUBISHI**

ATTITUDE  
MIRAGE



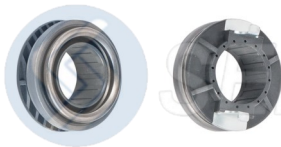
500 1187 10

**KCMCH107**

**Collarín Mecánico**

**CHRYSLER  
HYUNDAI  
KIA**

ACCENT  
ATTITUDE  
ELANTRA  
RIO  
SOUL  
VERNA



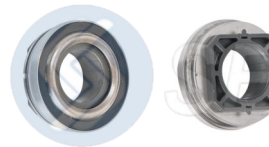
500 1220 10

**KCMCH76**

**Collarín Mecánico**

**CHRYSLER  
EAGLE  
MITSUBISHI**

AVENGER  
BREEZE  
ECLIPSE  
NEON  
PT CRUISER  
SEBRING  
STRATUS  
TALON



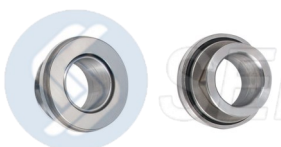
500 0826 10

**KCMFD04**

**Collarín Mecánico**

**FORD**

BRONCO  
CUSTOM  
E100  
E150  
E250  
E350  
F100  
F150



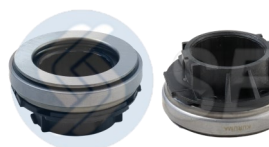
500 0453 10

**KCMGM01**

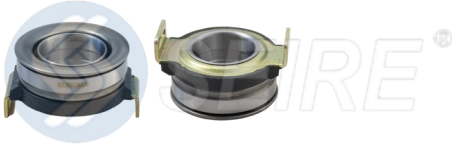
**Collarín Mecánico**

**GM**

CHEVY  
TORNADO



500 0320 10

**KCMGM03**
**Collarín Mecánico**


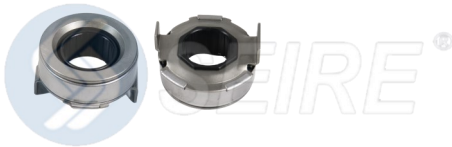
**GM**  
**PONTIAC**  
**SUZUKI**  
 BEAT  
 FIREFLY  
 MATIZ  
 METRO  
 SPARK  
 SWIFT

500 0926 10

**KCMGM06**
**Collarín Mecánico**


**GM**  
**PONTIAC**  
**SUZUKI**  
 AVEO  
 G3  
 SWIFT

500 0321 10

**KCMGM08**
**Collarín Mecánico**


**GM**  
  
 AVEO

500 1524 10

**KCMHY01**
**Collarín Mecánico**


**CHRYSLER**  
**HYUNDAI**  
  
 ATOS  
 GRAND i10  
 i10

500 1090 10

**KCMKIA01**
**Collarín Mecánico**


PRÓXIMAMENTE

**CHRYSLER**  
**KIA**  
  
 ATTITUDE  
 RIO  
 SOUL  
 VERNA

500 1220 10

**KCMNS01**
**Collarín Mecánico**


**NISSAN**  
**RENAULT**  
  
 200SX  
 ALMERA  
 LUCINO  
 PULSAR  
 SCALA  
 SENTRA  
 TSUBAME  
 TSURU III

500 0521 10

**KCMNS02**
**Collarín Mecánico**

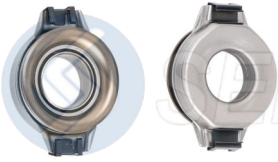

**NISSAN**  
**RENAULT**  
  
 APRIO  
 CLIO  
 KANGOO  
 LOGAN  
 MEGANE  
 PLATINA  
 SANDERO  
 SCENIC

500 0758 10

**KCMNS03**
**Collarín Mecánico**


**NISSAN**  
  
 720  
 ESTAQUITAS  
 FRONTIER  
 ICHI VAN  
 NV350  
 PATHFINDER  
 PICK UP  
 URVAN

500 0961 60

**KCMNS21**
**Collarín Mecánico**
**NISSAN**


210  
310  
810  
ESTAQUITAS  
HIKARI  
LUCINO  
NINJA  
PULSAR

500 0296 10

**KCMNS405**
**Collarín Mecánico**
**NISSAN**


200SX  
240  
ALTIMA  
AXXESS  
ESTAQUITAS  
ICHI VAN  
SAKURA  
SAMURAI

500 0191 60

**KCMNS73**
**Collarín Mecánico**
**NISSAN**

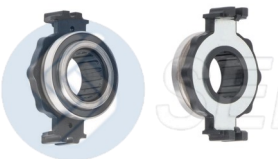

NP300  
URVAN

500 1090 10

**KCMNS74**
**Collarín Mecánico**
**NISSAN**


FRONTIER  
NP300  
NV350  
URVAN

500 0463 60

**KCMPU400**
**Collarín Mecánico**
**PEUGEOT**


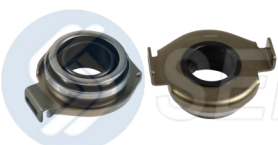
206

500 0742 10

**KCMPU411**
**Collarín Mecánico**
**PEUGEOT**


207  
301  
GRAND RAID  
PARTNER

500 0924 11

**KCMSUK01**
**Collarín Mecánico**
**SUZUKI**


SWIFT

**KCMTY01**
**Collarín Mecánico**
**TOYOTA**


4RUNNER  
CELICA  
CORONA  
CRESSIDA  
CROWN  
HIACE  
HILUX  
PICK UP

500 0536 10

**KCMTY03**
**Collarín Mecánico**
**TOYOTA**

 4RUNNER  
 HIACE  
 HILUX  
 T100  
 TACOMA


500 0539 10

**KCMTY05**
**Collarín Mecánico**
**TOYOTA**

 HIACE  
 HILUX

**KCMTY06**
**Collarín Mecánico**
**TOYOTA**

HILUX

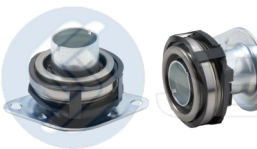


500 0536 10

**KCMVW00**
**Collarín Mecánico**
**SEAT  
VW**

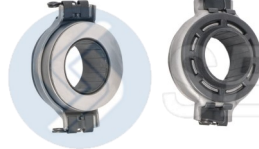
 ATLANTIC  
 CABRIOLET  
 CARIBE  
 CORDOBA  
 DERBY  
 GOLF  
 IBIZA  
 JETTA

**KCMVW03**
**Collarín Mecánico**
**SEAT  
VW**

 CORDOBA  
 CROSSFOX  
 GOL  
 IBIZA  
 LUPO  
 POLO  
 SAVEIRO  
 SPORTVAN


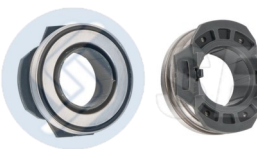
500 1185 10

**KCMVW04**
**Collarín Mecánico**
**VW**

 BRASILIA  
 COMBI  
 CORSAR  
 FOX  
 POINTER  
 SAFARI  
 SEDAN  
 VARIANT


500 0172 11

**KCMVW05**
**Collarín Mecánico**
**SEAT  
VW**

 BEETLE  
 DERBY  
 GOLF  
 JETTA  
 LEON  
 NEW BEETLE  
 TOLEDO  
 VAN


500 0440 10

**KCMVW06**
**Collarín Mecánico**
**SEAT  
VW**

 CORDOBA  
 IBIZA  
 POLO


500 1065 10



**KCMVW06-H**

**Collarín Mecánico**

**SEAT  
VW**

CORDOBA  
IBIZA  
POLO



**KSN0211**

**Collarín Mecánico**

**MB**

DC OM 904  
DC OM 906



500 0806 20

**KCC0146**

**Concéntrico**

**CHRYSLER  
FIAT  
JEEP**  
500X  
CHEROKEE  
DART  
RENEGADE



CH3473 SCC-146

**KFC0028**

**Concéntrico**

**FORD**

FIESTA  
FIGO  
IKON



510 0058 10

**KFC0511**

**Concéntrico**

**FORD  
MAZDA**

AEROSTAR  
B2300  
B2500  
B3000  
B4000  
BRONCO  
E250  
EXPLORER



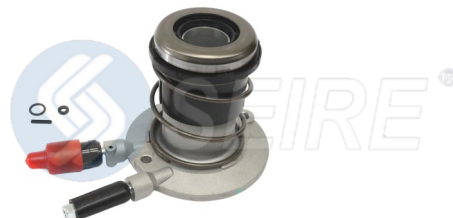
SFC-511

**KFC0890**

**Concéntrico**

**FORD  
MERCURY**

AEROSTAR  
BRONCO  
COUGAR  
E100  
E150  
E250  
E350  
EXPLORER



SFC-890

**KFC0893**

**Concéntrico**

**FORD  
MAZDA**

AEROSTAR  
B2300  
B2500  
B3000  
B4000  
BRONCO  
E250  
EXPLORER



SFC-893

**KFC1010**

**Concéntrico**

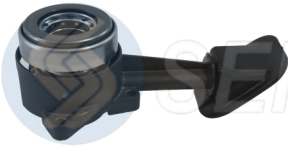
**FORD**

COURIER  
FIESTA  
FOCUS  
IKON  
KA



510 0011 10 CH3477 SFC-AM55

**KFC1200**



**Concéntrico**

**FORD**

FOCUS  
TRANSIT

510 0023 11 CH3478

**KFC1210**



**Concéntrico**

**FORD**

COURIER  
ECOSPORT  
FIESTA  
FOCUS

510 0062 10 CH3481 SFC-AM55

**KFC3485**



**Concéntrico**

**FORD**

TRANSIT

510 0160 10 CH3485

**KFC3487**



**Concéntrico**

**FORD  
LAND ROVER**

DEFENDER  
RANGER

CH3487

**KFCAM55**



**Concéntrico**

**FORD**

COURIER  
ECOSPORT  
FIESTA  
FOCUS  
IKON  
KA

CH3481 SFC-AM55

**KFCH6B1**



**Concéntrico**

**FORD**

FIGO

**KFIC0965**



**Concéntrico**

**CHRYSLER  
FIAT**

ALBEA  
IDEA ADVENTURE  
PALIO  
RAM 700  
STRADA  
VISION

510 0074 10 SFIC-965

**KFIC7419**



**Concéntrico**

**FIAT**

PALIO

510 0074 19

**KGC0077**

**Concéntrico**

**GM**

SONIC  
TRAX

CH3250 SGC-077

**KGC0112**

**Concéntrico**

**GM**

SILVERADO

SGC-112

**KGC0536**

**Concéntrico**

**GM**

SPARK

510 0307 10 SGC-536

**KGC0664**

**Concéntrico**

**GM**

C1500  
C2500  
SILVERADO

510 0087 10 SGC-664

**KGC0944**

**Concéntrico**

**GM**

**NISSAN  
PONTIAC**  
BLAZER  
C1500  
C2500  
C3500  
CAMARO  
CORVETTE  
FIREBIRD  
JIMMY

SGC-944

**KGC1038**

**Concéntrico**

**GM**

**PONTIAC  
SATURN**  
CAVALIER  
GRAND AM  
J2000  
SUNBIRD PONTIAC  
SUNFIRE  
VUE

510 0051 20 SGC-575

**KGC1080**

**Concéntrico**

**GM**

**PONTIAC**  
BERETTA  
CAVALIER  
J2000  
SUNBIRD PONTIAC  
SUNFIRE

510 0069 10

**KGC1090**

**Concéntrico**

**GM**

**OLDSMOBILE  
PONTIAC**  
ACHIEVA  
BERETTA  
CAVALIER  
CORSA  
GRAND AM  
SUNBIRD PONTIAC  
SUNFIRE  
Z24

510 0070 10

**KGC1109**



510 0073 10 CH3240 SGC-061

**Concéntrico**

**GM**

ASTRA  
CORSA  
MERIVA  
TORNADO  
ZAFIRA

**KGC1220**



510 0063 10 CH3240 SGC-708

**Concéntrico**

**GM  
PONTIAC**

ASTRA  
COBALT  
CORSA  
MERIVA  
MONTANA  
ONIX  
PRISMA  
VECTRA

**KGC3123**



510 0229 10

**Concéntrico**

**GM**

CAVALIER

**KGC6828**



510 0174 10 CH3460 SGC-828

**Concéntrico**

**GM**

OPTRA

**KHYC1421**



PRÓXIMAMENTE

**Concéntrico**

**HYUNDAI**

Creta

**KMC6615**



510 0027 22 3461 ZA5108.32 5108A1

**Concéntrico**

**MB**

DC OM 906

**KMEC1815**



510 0009 10 CH3242

**Concéntrico**

**MB**

A160  
CLASE B

**KNC1121**



510 0097 10 CH3243 SNC-527

**Concéntrico**

**NISSAN  
RENAULT**

KICKS  
LOGAN  
MARCH  
MICRA  
NOTE  
SANDERO  
TiIDA  
V-Drive

**KNC4544**



**Concéntrico**

**NISSAN  
RENAULT**

DUSTER  
FLUENCE  
SENTRA  
TiIDA

**KRC1211**



**Concéntrico**

**RENAULT**

MEGANE  
SCENIC II

510 0088 10

**KSC0240**



**Concéntrico**

**SUZUKI**

CIAZ

**RDH1501**



**Concéntrico**

**MB**

L  
LO

510 0055 10

**RDH1512**



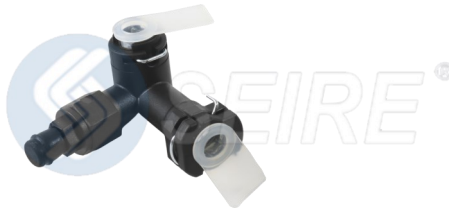
**Concéntrico**

**MB**

TORINO

510 0054 20 510 0055 10

**KGV0589**



**Conector**

**GM**

CORSA  
CRUZE  
TORNADO  
TRAX

SGV-589



Intercambio	#Seire	Intercambio	#Seire	Intercambio	#Seire
<b>LUK</b>		510 0027 22	KMC6615	512 0359 10	KFE0412
500 0172 11	KCMVW04	510 0051 20	KGC1038	512 0387 10	KTEB001
500 0191 60	KCMNS405	510 0054 20	RDH1512	512 0390 10	KTEK051
500 0296 10	KCMNS21	510 0055 10	RDH1512	512 0393 10	KTE26120
500 0320 10	KCMGM01	510 0055 10	RDH1501	512 0408 10	KME0832
500 0321 10	KCMGM06	510 0058 10	KFC0028	512 0408 10	KME1578
500 0440 10	KCMVW05	510 0062 10	KFC1210	<b>FTE</b>	
500 0453 10	KCMFD04	510 0063 10	KGC1220	SCC-146	KCC0146
500 0463 60	KCMNS74	510 0069 10	KGC1080	SCE-877	KCE0877
500 0521 10	KCMNS01	510 0070 10	KGC1090	SCE-881	KCE0881
500 0536 10	KCMTY06	510 0073 10	KGC1109	SCM-103	KCM0103
500 0536 10	KCMTY01	510 0074 10	KFIC0965	SCM-138	KCM0138
500 0539 10	KCMTY03	510 0074 19	KFIC7419	SFC-511	KFC0511
500 0550 10	KCMCH02	510 0087 10	KGC0664	SFC-890	KFC0890
500 0742 10	KCMPU400	510 0088 10	KRC1211	SFC-893	KFC0893
500 0758 10	KCMNS02	510 0097 10	KNC1121	SFC-AM55	KFC1210
500 0806 20	KSN0211	510 0160 10	KFC3485	SFC-AM55	KFC1010
500 0826 10	KCMCH76	510 0174 10	KGC6828	SFC-AM55	KFCAM55
500 0924 11	KCMPU411	510 0229 10	KGC3123	SFE-412	KFE0412
500 0926 10	KCMGM03	510 0307 10	KGC0536	SFE-476	KFE0476
500 0961 60	KCMNS03	511 0061 10	KTM0K012	SFE-485	KFE0485
500 1065 10	KCMVW06	511 0150 10	KWM0721	SFE-530	KFE0530
500 1090 10	KCMHY01	511 0336 10	KFM0434	SFE-891	KFE0891
500 1090 10	KCMNS73	511 0339 10	KWM06Q0	SFIC-965	KFIC0965
500 1090 10	KCMCH01	511 0612 10	KFM0443	SFM-005	KFM0005
500 1185 10	KCMVW03	511 0643 10	KGM0997	SFM-019	KFM0019
500 1187 10	KCMCH106	511 0654 10	KMM5036	SFM-108	KFM0108
500 1220 10	KCMKIA01	511 0656 10	KMMA015	SFM-1133	KFM1133
500 1220 10	KCMCH107	511 0658 10	KTM7401	SFM-124	KFM0124
500 1524 10	KCMGM08	511 0755 10	KNM0KM0	SFM-270	KFM0270
510 0009 10	KMEC1815	511 0756 10	KNM01HK	SFM-2S61	KFM2S61
510 0011 10	KFC1010	512 0151 10	KWE0261D	SFM-434	KFM0434
510 0023 11	KFC1200	512 0340 10	KWE0261A	SFM-443	KFM0443

Intercambio	#Seire	Intercambio	#Seire	Intercambio	#Seire
SFM-578	KFM0578	SME-61015	KME3551	CCM2170	KFMXS61
SFM-579	KFM0579	SMM-11010	KMM2558	CCM2171	KFM2S61
SFM-886	KFM0886	SNC-527	KNC1121	CCM2185	KFM2185
SFM-887	KFM0887	SNE-61006	KNE3529	CCM2198	KNM2198
SFM-XS61	KFMXS61	SNE-61009	KNE3541	CCM2238	KRM2238
SGC-061	KGC1109	SNM-11044	KNM2516	CCM2257	KFM2257
SGC-077	KGC0077	SNM-1HK	KNM01HK	CCM2281	KRM2281
SGC-112	KGC0112	SNM-KM0	KNM0KM0	CCM2388	KWM06Q0
SGC-536	KGC0536	SRM-488	KRM2238	CCM2399	KCM2399
SGC-575	KGC1038	SSM-79J	KSM079J	CCM2487	KFM0434
SGC-664	KGC0664	STE-61034	KTE3512	CCM2495	KSM2495
SGC-708	KGC1220	STM-11050	KTM2552	CCM2516	KNM2516
SGC-828	KGC6828	STM-26200	KTM26200	CCM2552	KTM2552
SGC-944	KGC0944	SWE-261A	KWE0261A	CCM2558	KMM2558
SGE-425	KGE0425	SWE-261D	KWE0261D	CCM7037	KTM0K012
SGE-870	KGE0870	SWM-388AB	KWM0388AB	CCM7741	KGM7741
SGE-871	KGE0871	SWM-401B	KWM0401B	CH3240	KGC1220
SGE-872	KGE0872	SWM-6Q0	KWM06Q0	CH3240	KGC1109
SGE-873	KGE0873	SWM-721	KWM0721	CH3242	KMEC1815
SGE-874	KGE0874	LPR		CH3243	KNC1121
SGM-010	KGM0010	CCE3050	KFE0412	CH3250	KGC0077
SGM-097	KGM0097	CCE3052	KNE3052	CH3460	KGC6828
SGM-137	KGM0137	CCE3081	KME3081	CH3473	KCC0146
SGM-153	KGM0153	CCE3315	KSE3315	CH3477	KFC1010
SGM-539	KGM0539	CCE3507	KNE3507	CH3478	KFC1200
SGM-623	KGM0623	CCE3509	KNE3509	CH3481	KFC1210
SGM-712	KGM0712	CCE3512	KTE3512	CH3481	KFCAM55
SGM-769	KGM0769	CCE3529	KNE3529	CH3485	KFC3485
SGM-800	KGM0800	CCE3541	KNE3541	CH3487	KFC3487
SGM-856	KGM0856	CCE3551	KME3551		
SGM-997	KGM0997	CCE8812	KGE8812		
SGV-589	KGV0589	CCE8813	KGE8813		
SHE-61023	KHE1023	CCM2111	KWM0721		

AD EN AUTOPARTES · GARANTÍA Y CALIDAD EN AUTOPARTES  
GARANTÍA Y CALIDAD EN AUTOPARTES · GARANTÍA Y CALIDAD EN  
AUTOPARTES · GARANTÍA Y CALIDAD EN AUTOPARTES · GARANT  
CALIDAD EN AUTOPARTES · GARANTÍA Y CALIDAD EN AUTOPAR  
ES · GARANTÍA Y CALIDAD EN AUTOPARTES · GARANTÍA Y CAL  
AD EN AUTOPARTES · GARANTÍA Y CALIDAD EN AUTOPARTES  
GARANTÍA Y CALIDAD EN AUTOPARTES · GARANTÍA Y CALIDAD EN  
AUTOPARTES · GARANTÍA Y CALIDAD EN AUTOPARTES · GARANT



Calle 1, No. 310, Nave 16  
Conjunto Industrial Palmares  
Parque Industrial, Jurica, 76100  
Querétaro, Qro.

**e-mail:** [ventas@seireqro.com.mx](mailto:ventas@seireqro.com.mx)

**Tel.** (442) 192 1700

**Lada sin costo:** 01 800 509 39 29

[www.gruposeire.com](http://www.gruposeire.com)